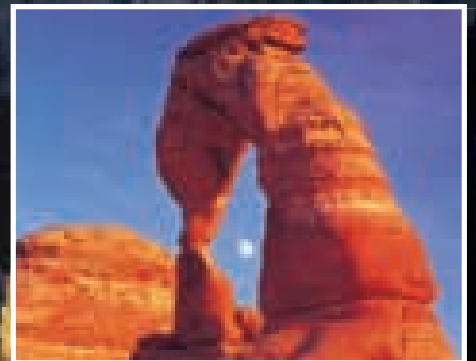
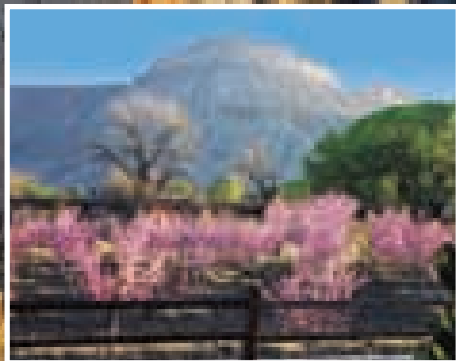
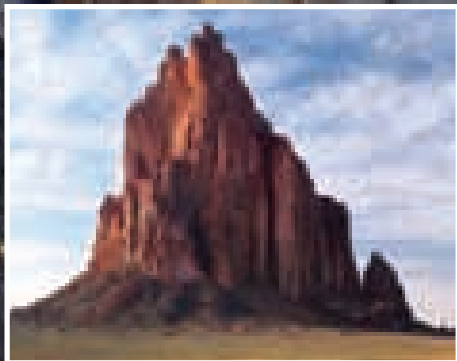


Grand Circle

Official 2014 Travel Planner



Arizona • Colorado • Nevada • New Mexico • Utah

www.grandcircle.org



www.ExploreNavajo.com



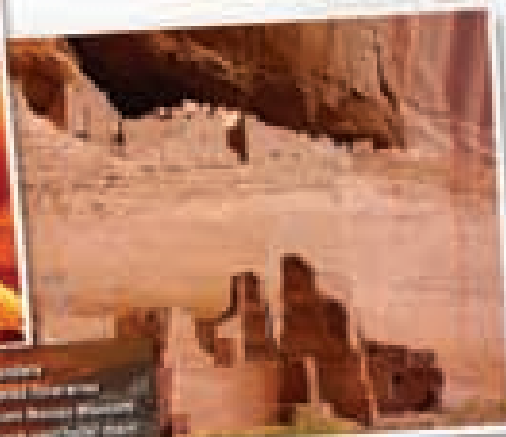
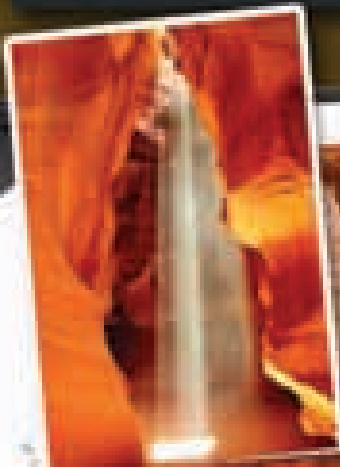
Explore Navajo.com

A Culture Like No Other!

Quality Inn®
Window Rock

Quality Inn®
Tuba City

Quality Inn®
Lake Powell



Got this free magnet at website

Interactive Museum at Tuba City was just AWESOME!

Booked all rooms at website too.

Day 3 - Saturday
Another great night's sleep at the Quality Inn

The scenery here is amazing!
Fabulous vacation. So many pics.
Great food at the hotel restaurants in Window Rock, Tuba City, and Lake Powell.

FAVORITE TRIP YET!
😊

We saw roosting Mustangs



Window Pass

Scan & begin to Explore.



GRAND CIRCLE

The Grand Circle Travel Planner is the official guide of the Grand Circle Association. The Association is a non-profit member organization dedicated to the promotion of visitation and travel within Arizona, Colorado, Nevada, New Mexico and Utah.

GRAND CIRCLE® ASSOCIATION BOARD OF DIRECTORS

ED SPEAR, PRESIDENT
Pony Express Territory
Ely, NV

DEBBIE KOVALIK, VICE PRESIDENT
Grand Junction Visitor
& Convention Bureau
Grand Junction, CO

JASON MURRAY,
SECRETARY / TREASURER
Southwest Adventure Tours
Cedar City, UT

DONNITA PARKER, DIRECTOR
Red Rock Jeep Tours
Phoenix, AZ

ROBIN MARQUIS, DIRECTOR
Lake Powell Resorts & Marinas
Page, AZ

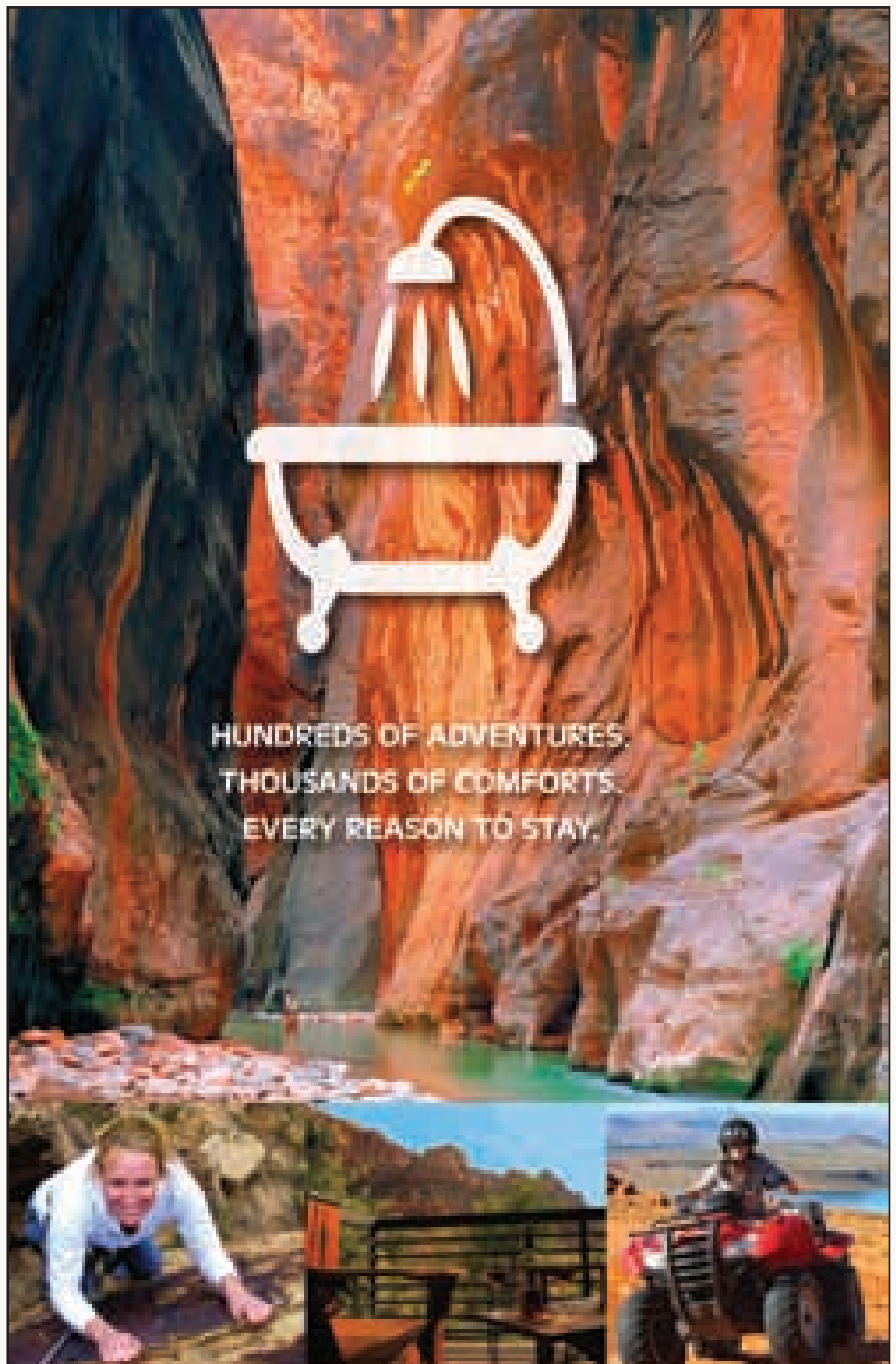
PHYLLIS VEALE, DIRECTOR
Grand Vista Hotel
Grand Junction, CO

MICHELLE KIEN
Forever Resorts
Scottsdale, AZ

WAYNE PARKER, DIRECTOR
Red Rock Jeep Tours
Phoenix, AZ

To learn more about the Grand Circle Association or to join, please contact:

Laurie Frantz,
ASSOCIATION MANAGER
info@grandcircle.org
505-466-1889



HUNDREDS OF ADVENTURES.
THOUSANDS OF COMFORTS.
EVERY REASON TO STAY.

SPRINGDALE, UTAH (at the entrance to Zion National Park) has less than 500 year-round residents, yet hosts more than 2 million overnight guests each year, making it one of the most hospitable towns in the country. This adventure mecca offers a unique assortment of lodging, dining and shopping without ever having to leave the captivating walls of Zion Canyon.

ZION
NATIONAL PARK

AtoZION.com

Fly direct: Delta via SLC or United via Denver

WELCOME to

WELCOME

Cover: Lake Powell, Glen Canyon National Recreation Area, AZ/UT; Photo: Chad Ehlers, Alamy. Insets: Ship Rock, NM, Inge Johnson; Grand Junction, CO, Grand Junction Visitors and Convention Bureau; Arches National Park, UT, Maury Milbradt. Pages 4 & 5: Ben Blankenburg, Sportstock.

the Grand Circle

Dear Fellow Travelers,

On behalf of the many members of the Grand Circle Association, I invite you to explore the best of America's Southwest - The Grand Circle. This is a diverse land of magnificent natural wonders, rich cultural traditions and colorful history.

From the depths of Arizona's Grand Canyon to the lofty mountains and mesas of Western Colorado; from the dramatic pinnacles of New Mexico to Utah's soaring stone arches, a varied terrain will surprise you at every turn with its diversity. Traveling here is an adventure you will find nowhere else.

The Grand Circle is covered with National Parks and Monuments, laced with National Scenic Byways and dotted with archaeological wonders. As you tour through this wonderland of scenic attractions, experience Native American culture, both ancient and modern, rejuvenate yourself in welcoming communities and get outdoors for some adventure and exercise.

Whether visiting for the first time or returning, you will be planning your next trip all the while you are here.

Enjoy!



Ed Spear, President

ARCHES NATIONAL PARK, UT

Canyons of the



GRAND CANYON NATIONAL PARK

The Colorado River has carved a score of canyons, but none so awe-inspiring as Glen Canyon and, of course the most awesome of all, the Grand Canyon. They are a study in contrasts: to early explorers of the Grand, its tumultuous waters work on the nerves, there is no repose in it, nothing that is soft. Glen Canyon, though, was almost absolutely serene, an interlude for a pastoral flute.

That is still true today, especially with most of Glen Canyon sleeping below the surface of Lake Powell. However, the upper sandstone walls of Glen Canyon are as seductive as ever and they are more approachable. Now we can boat, float, ski, fish, sail, or kayak amongst sheer cliff walls and billowing towering domes. As for the Grand Canyon, most of us simply stare with incomprehension. It's too vast, too old, too grand to grasp.

But for those of us who do hike or ride or raft into its depths, the Grand Canyon truly can transform our lives.

GRAND CANYON NATIONAL PARK'S SOUTH RIM. The Canyon, the Grand itself needs no other names. Ten miles wide, a mile deep. A silvery ribbon of water still relentlessly continues to slice through billion year old rock. From the best vantage points on the rim, you see less than a quarter

Colorado River



GRAND CANYON NATIONAL PARK / SOUTH RIM, AZ

of the Canyon, yet even this inspires us to silence. Hike down Bright Angel or Kaibab or Hermit Trail, and you'll begin to understand the enormity of these vertical walls. At 7,000 feet, the South Rim glistens with snowclad buttes in winter, shimmers with heat mirages in summer. On the canyon floor, temperatures can easily reach over 100 degrees in July and August. Hiking, riding mules to Phantom Ranch, and flight-seeing all offer unforgettable

moments in the Canyon. You can even raft (no rapids) for just a day below the Glen Canyon Dam in serene Marble Canyon (see Page, AZ). Be sure to visit the Canyon View Information Plaza located at Mather Point to find out about shuttle schedules, interpretive programs, and hiking conditions. From the eastern entrance of the Park, a spectacular road winds along the rim, offering turnouts and scenic overlooks of the Canyon. The South Rim is open year-round.

www.nps.gov/grca; for Park lodging and concessions, 888-297-2757, www.grandcanyonlodges.com

Nearby Communities (South Rim): Tusayan is just a few miles south of the Canyon's southern entrance, and has a wide variety of hotels and restaurants. The National Geographic IMAX theater offers stunning and fascinating perspectives of the canyon on its giant screen. Grand Canyon flightseeing, by

helicopter or fixed-wing aircraft, is available from Tusayan's airport. At the Park's east entrance, the small reservation towns of Cameron and Gray Mountain each have lodging, shopping and a restaurant. Williams has numerous hotels and restaurants, and is the origination point for the Grand Canyon Railway, a historic ride to the South Rim, complete with strolling musicians and a mock train robbery.

www.williamschamber.com

Flagstaff is the commercial center of northern Arizona, and has a nice historic district, many accommodations and restaurants, and several additional attractions, including Lowell Observatory and the Museum of Northern Arizona, which offers an excellent introduction to the natural and human history of the Colorado Plateau. Vestiges of Historic Route 66 are found in both Flagstaff and Williams. To the south, eclectic and bustling Sedona is set amid tall red rock buttes.

www.flagstaffarizona.org

Riordan Mansion State Historic Park. A tour of the brothers' massive 13,000 square foot home provides insight into the life of a wealthy frontier family in the early 1900s. Its rustic exterior, perhaps Arizona's finest example of Craftsman style architecture, is a striking contrast to its opulent interior of hand-crafted furniture and period antiques. In Flagstaff - 928-779-4395.

www.pr.state.az.us



HISTORIC ROUTE 66

Stretching from the New Mexico border to California, visitors find many reminders of the glory of the "Mother Road" across Northern Arizona. Winslow, Holbrook, Flagstaff, Williams, Peach Springs and Kingman all have vestiges of the motels, diners and gas stations that made Route 66 the epitome of highway travel. Even today, wanderers travel here from around the globe to experience the nostalgia of those days.

Coconino National Forest. Encompassing lands around Flagstaff, AZ the Coconino is particularly known for its massive ponderosa pine forests - the largest such stands in the world. Several distinctive environments make up the Coconino, each with its own flavor - from Sedona's red rocks to the San Francisco Peaks. As with all multi-use national forests, Coconino offers outstanding recreation both summer and winter. 928-527-3600.

www.fs.fed.us/r3/coconino

Walnut Canyon National Monument. South of Flagstaff, the monument offers a steep trail into the canyon to view the high limestone alcoves where the Sinagua built their homes from 1100 to 1250. 928-526-3367.

www.nps.gov/waca



RED ROCK SCENIC BYWAY

Red Rock Scenic Byway winds through Sedona's Red Rock Country, often called a "museum without walls." Travelers are amazed by the high desert's power, diversity, and sense of intimacy with nature. Inhabited for thousands of years, the stunning red rocks are alive with a timeless spirit that captivates and inspires. 7.5 miles / 12.1 km I-17 to Sedona.

Sunset Crater and Wupatki National Monuments.

This area is part of a 2,200 square mile volcanic field near Flagstaff with more than 400 cinder cones. Sunset Crater is the youngest volcano; it exploded in AD 1065 and blanketed the entire region in thick, moisture preserving ash. Different prehistoric societies moved here to take advantage of the suddenly rich soil, so the area became a trading crossroads. More than 800 ruins - the homes and villages of the Sinagua and Ancestral Puebloans - have been found in this immediate area, and are now protected as Wupatki National Monument. 928-526-0502.

www.nps.gov/sucr or www.nps.gov/wupa

Kaibab National Forest. KY-bab is a Paiute word meaning mountain lying down. Its 1.6 million acres straddle the Grand Canyon with ecosystems ranging from desert to alpine. Wonderful for mountain biking, trail-riding, hiking and backpacking in summer; cross country skiing and



GRAND CANYON NATIONAL PARK / NORTH RIM

snowmobiling in winter (North Rim).
928-635-8200.

www.fs.fed.us/r3/kai/index

GRAND CANYON NORTH RIM. A different world greets visitors to the other rim of the Canyon. Higher in elevation, lower in visitation, the North Rim offers splendid moments of solitude on the cool, green Kaibab Plateau. But the vistas across the Canyon and into its depths still stun and inspire, and trails still beckon hikers down below the rim. Visitor facilities including accommodations are open from mid May to mid October. Once it snows, access to the North Rim is closed for the winter. 928-638-7888, www.nps.gov/grca; for North Rim lodging and concessions, 877-386-4383.
www.Travel-Forever.com/14gctp



**KAIBAB PLATEAU
NORTH RIM PARKWAY**

Travel through the Kaibab Plateau's meadows and forests of dense ponderosa pine and mixed conifer to the brink of the spectacular north rim of the Grand Canyon, 1,000 feet higher than the south rim. Watch for the abundant wildlife and experience breathtaking views of the canyon. 42 mi. / 68 km Jacob's Lake to North Rim.

Nearby Communities (North Rim):

Centrally located to visit many Parks, Kanab is the largest town north of the Grand Canyon. It offers dozens of activities horseback and jeep tours, mountain biking, photography workshops, flight-seeing, the world's largest animal sanctuary, and an old west town created around Hollywood's movie sets. 435-644-5033.

www.kaneutah.com

Coral Pink Sand Dunes State Park.

Red rock walls give way to a wide plain of bright reddish-pink sand dunes, dotted with wildflowers and wind-swept,

COME AS YOU **ARE,**
PLAN AT **YOU GO.**

Flagstaff
The destination for all seasons

FlagstaffArizona.org | 888.558.4789

EXPERIENCE HOPI
Moenkopi Legacy Inn & Suites

Adjacent to Tuba City, AZ

A PLACE WHERE ART, CULTURE, & TRADITION COME ALIVE

LOCAL ARTS MARKET

www.hopiartsmarket.com

Plan your Trip to Hopi Now by Visiting
www.hopiconnec.com - 928-283-4500

low-clinging shrubs. Hundreds of offroading trails in the vicinity. 24 miles west of Kanab, UT. 435-648-2800.

www.stateparks.utah.gov

Grand Canyon-Parashant National Monument. Born on January 11, 2000 exactly 92 years to the day that President Theodore Roosevelt originally declared Grand Canyon a national monument this one million acre monument protects invaluable watershed, diverse habitats biodiversity, shelter for large, increasingly rare predators, and a chance for solitude along the Canyon's north rim. Rugged four wheel drive roads and primitive camping in the monument are available.

435-688-3200.

www.nps.gov/para

Kaibab Paiute Reservation. Established around the perimeter of Pipe Spring, Kaibab Paiute Indian Reservation is currently home to about 300 people. The Paiutes had been a hunter gather society that moved among springs and seasonal water sources. When Mormon settlers and other Anglos took over most of the available land and water, surviving Paiutes became dependent on them for food and supplies. The tribe had less than 100 people by the 1900s. Contemporary Paiutes cater to tourists and other passersby for tribal income.

Pipe Spring National Monument. Native Americans used this area for at least a thousand years before the Mormons arrived in the 1860s to begin cattle ranching. Made a national monument in 1923, it offers excellent living history demonstrations, an old fort, and interpretive trails that offer a glimpse of American Indian and pioneer life in the Old West. 15 miles SW of Fredonia, AZ. 928-643-7105.

www.nps.gov/pisp

LAKE POWELL/GLEN CANYON NATIONAL RECREATION AREA. Glen Canyon is for pure delight. So spoke explorer John Wesley Powell of this rare section of the Colorado River that did not terrify nor torment his men. They frolicked in its warm waters and gawked at its sculptured side canyons, just as people do today. Lake Powell is without doubt, one of the most sublime places on earth. Blue waters lap at sculptured red sandstone where water meets desert, the best of two worlds.

GRAND CANYON

GRAND CANYON THE HIDDEN SECRETS IN IMAX

Explore 4,000 years of history in 34 minutes!
Shows hourly, available in 8 languages,
includes FREE Gift Pack.

Experience the Grand Canyon with
world-famous Pink Jeep Tours!
Receive a free movie ticket
with each tour purchased.



National Geographic Store and Exhibits,
Pizza Hut® Express & much more!

All located within the...



928.638.2468

VISITOR CENTER ExploreTheCanyon.com

Red Feather Lodge

Kids 17 & Under Stay FREE with Parents
FREE WiFi • Outdoor Pool and Spa (seasonal)
Laundry Facilities on Property
Pets Welcome (Motel Only)

Plaza Bonita Restaurant located on property
Serving Mexican & American Cuisine

GCA.RedFeatherLodge.com • 800.538.2345



RP'S STAGE STOP

Gifts, Coffee, Internet Cafe
& Original Handmade
Native American Jewelry

(within walking distance of the Red Feather Lodge)

The View Brings You. The Adventure Keeps You.

BEST STEAKS IN ARIZONA!

Open for
Lunch & Dinner



BIG E STEAKHOUSE

SALOON

Continuous Entertainment Nightly!

928.638.0333 • BigESteakhouse.com



Full-Service Restaurant (Buffet or Menu)
Outdoor Pool and Hot Tub (seasonal)
FREE WIFI • Kids 16 & Under Stay FREE
Superior Linens and Partial Turndown Service
Indoor Garden Atrium with 18 ft. Spa
Gift Shop • Laundry Facilities • Pet Friendly

Find your National Park Trip Planner
on our website.

GrandCanyonPlaza.com

800.995.2521 or 928.638.2673



BEST WESTERN PREMIER
Grand Canyon
Squire Inn

Great Restaurants (buffet*, casual or fine dining),
Outdoor Heated Pool* and Jacuzzi
Fireside Lounge and Sports Bar
Family Fun Center: Video Games, Billiards & Bowling
Meeting and Banquet Services *Seasonal
GrandCanyonSquire.com
800.622.6966 or 928.638.2681



GRAND CANYON

Indoor Pool and Spa
FREE Express Start* Breakfast
FREE In-room High Speed Internet

GCanyon.com

800.473.2269 or 1.800.HOLIDAY



Spin It: Drive through to view North American animals in their natural environment.
Stroll It: Walk through Fort Bearizona to observe smaller animals up-close.
Soar It: Witness the amazing High Country Raptor show.

OPEN YEAR ROUND



928.635.2289 • Bearizona.com



Stay at the heart of it all...here at the Grand Canyon South Rim...where the next breathtaking sunset is only moments away. From helicopter flights to guided jeep tours, or just knowing the perfect view point for sunrise...let us help plan your Grand Canyon adventure. Visit our website or call us for information.

GrandCanyonCVB.org • 928-638-2901 • One mile from Grand Canyon South Rim Entrance.

Millions of visitors now splash and play here in every conceivable way houseboating, jetskiing, bass fishing, skin diving, kayaking, parasailing, and water skiing. Take a boat tour uplake from Wahweap Marina or Antelope Point Marina to Rainbow Bridge. Rent a houseboat for a week to explore the thousands of channels braced by high rock walls and lined with soft sandy beaches. Hike from the lake into Glen Canyon's magical backcountry, following undulating rock for miles. Tumble down sand dunes and lose yourself in slot canyons. Simply enjoy. 928-608-6405. www.nps.gov/glca; for Park lodging, boat tours, or rentals, call 800-528-6154, www.lakepowell.com or call 800-255-5561, www.Travel-Forever.com/14gctp

Antelope Canyon. Slot canyons are magical crevasses in rock, split and polished by water and time, a favorite

subject of photographers. Guided jeep and photo tours are available from Page, AZ. www.visitpagelakepowell.com



LAKE POWELL, AZ, UT

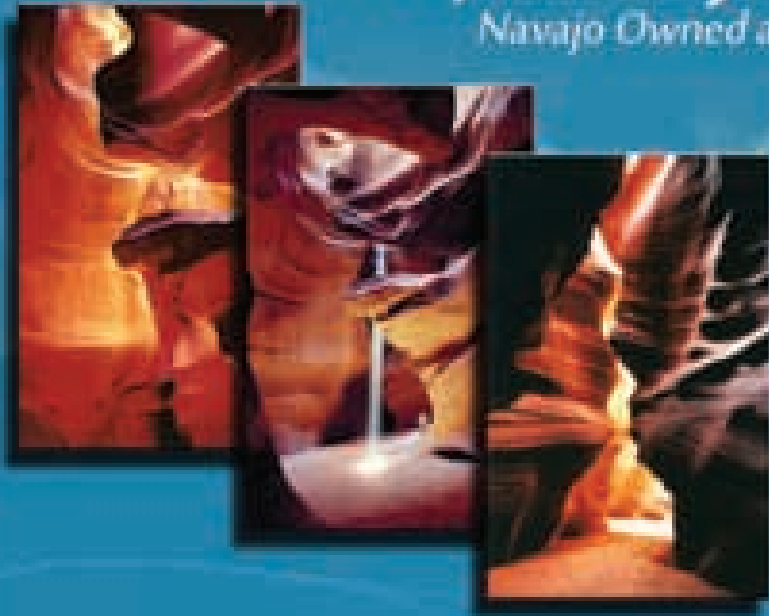
Glen Canyon Dam. Construction began in 1960 and the gates closed in 1963, backing up waters that now lap 1,900 miles of shoreline. Informative tours of the dam typically are offered daily. Check at the Carl Hayden Visitor Center for schedule. 928-608-6404. www.nps.gov/glca

Marble Canyon. Icy waters gush into the Grand Canyon from below the Glen Canyon Dam creating a flat stretch of emerald water perfect for mellow float trips and world class fly fishing. Call 928-645-2741 for rafting and guiding companies.

Rainbow Bridge National Monument. Sheer cosmic poetry is how one writer describes the world's largest natural bridge. Accessible by boat (half and full-day tours from Wahweap Lodge & Marina and full-days from Bullfrog and Halls Crossing

Antelope Canyon Tours, Inc.

Navajo Owned and Operated by Carolene Ekis



Tour #1 - Sightseer Tour 1.5 hrs

Enjoy a guided tour into the canyon with our Native guides. They will point out all the key areas of the canyon.

Departing: 7:00, 8:00, 9:30, 11:30, 1:30, 3:30, 4:30 *subject to available light/glow in canyon

Tour #2 - Photo Tour 2.5 hrs

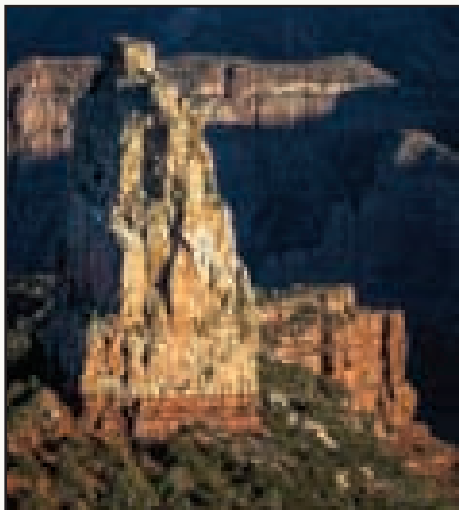
Designed for experienced photographers. Limited seats - reservations highly recommended.

Departing: 11:30 AM (year-round)
9:30 AM (October - February)

Office: 22 S. Lake Powell Blvd Page, AZ. corner of the Dam Plaza next to Pizza Hut

Phone: 928.645.9102 | Toll Free: 866.645.9102

www.antelopecanyon.com



JACOB LAKE INN

Rooms, Gift Shop,
Restaurant, Store and
Gas Station

Gateway to the North Rim
of the
Grand Canyon?

1-800-333-3311
www.visitpagelakepowell.com
www.jacoblakeinn.com



page

lake powell AZ

WILD, BLUE, WANDER.



In the Center of the Grand Circle

www.visitpagelakepowell.com | 888.261.PAGE



It's Called "Grand" for a Reason

—Relax in amazing Forever Resorts' locations along the way!



Forever Resorts

UTAH • ARIZONA • NEVADA

Travel-Forever.com/14gctp

Houseboating:

Antelope Point Marina on Lake Powell, AZ
Catalytic Bay Marina on Lake Mead, NV
Cottonwood Cove Marina on Lake Mohave, NV
800.255.5561

Lodging:

Grand Canyon Lodge – North Rim, AZ
The Lodge at Bryce Canyon, UT
877.386.4383

 [/travelloeverresorts](https://www.facebook.com/travelloeverresorts)



Forever Resorts is an authorized concessionaire of the National Park Service and an Equal Opportunity Service Provider. Antelope Point Marina is owned and operated by National Park Holdings U.S., an authorized concessionaire of the National Park Service. Other logos belong to their respective owners.



LAKE POWELL, AZ, UT

Marinas) and via a strenuous trail from Navajo Mountain. The towering bridge is a sacred site to neighboring tribes, so visitors are asked to treat the Bridge with the respect they would use in a cathedral. For tours:

www.nps.gov/rabr

Nearby Communities: Page, on the shores of Lake Powell, was founded as the company town for construction of the Glen Canyon Dam. Today, it has grown into a tourism and recreational center offering great golfing, sightseeing and lake and backcountry access. It is a perfect base for exploring all of the attractions the area has to offer with lots of options for lodging, meals and entertainment. The Page Tourism Bureau can help with activity reservations.

John Wesley Powell Museum. A small museum featuring the famed explorer of the Colorado and Green Rivers, canyon and river geology, and the making of Lake Powell. Located in Page, AZ. 928-645-9496.

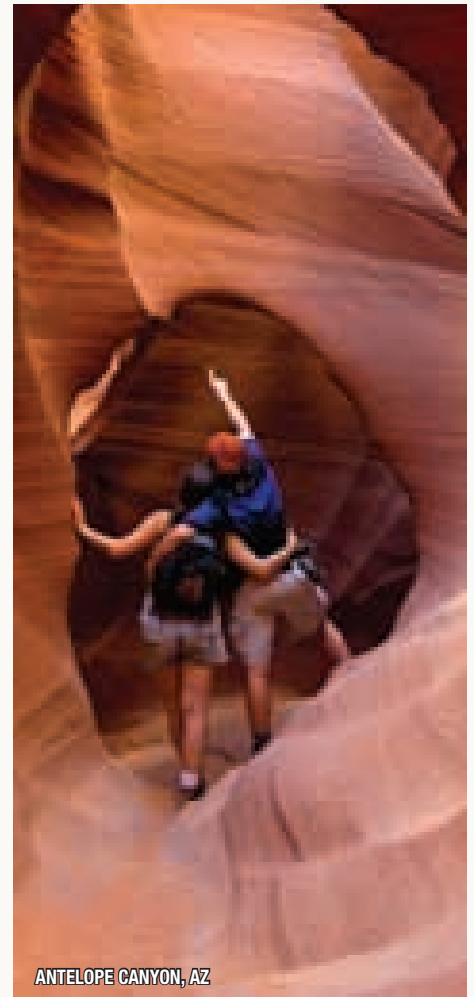
www.powellmuseum.org

Navajo National Monument. Three beautifully preserved cliff dwellings (only one is visible by most visitors) are protected here. Exhibits focus on Ancestral Puebloan and Navajo culture, and uses for native plants. Between Page and Kayenta. 928-672-2700.

www.nps.gov/nava

Petrified Forest National Monument. Multi-hued badlands of the Painted Desert, 225 million-year old fossils, and one of the world's largest and most

www.grandcircle.org



ANTELOPE CANYON, AZ

colorful concentrations of petrified wood make this a fun side trip. Visitors often drive one way through the Park to connect between I-40 and Hwy 180. 928-524-6228.

www.nps.gov/pefo

Bullfrog & Hall's Crossing Marinas. A ferry crosses the lake daily; check schedules.

Communities nearest Upper Lake Powell are **Blanding** and **Hanksville**, providing access to Bullfrog, Hall's Crossing and Hite Marinas. Each offers boat rentals. Bullfrog offers half-day tours to Rainbow Bridge and has a small lodge, restaurant and other amenities.

www.lakepowell.com

Explore

The "Heart of the Parks": Kanab/Southern Utah



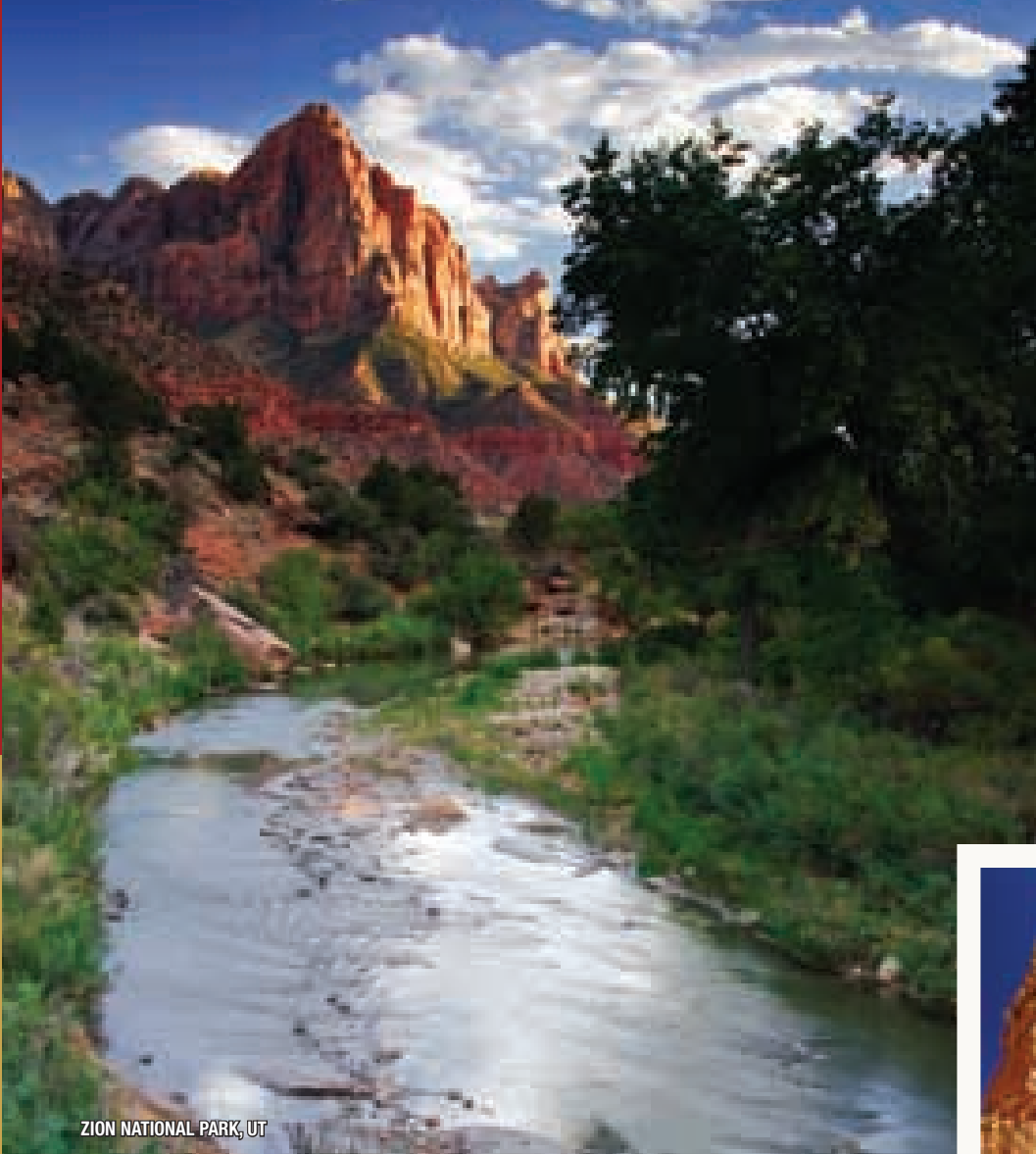
KANAB, UTAH is centrally located right in the middle of TEN of America's greatest scenic wonders — making it the perfect Base-camp for exploring, hiking, boating, photography, and back-country adventures!



www.VisitSouthernUtah.com

1-800-733-5263





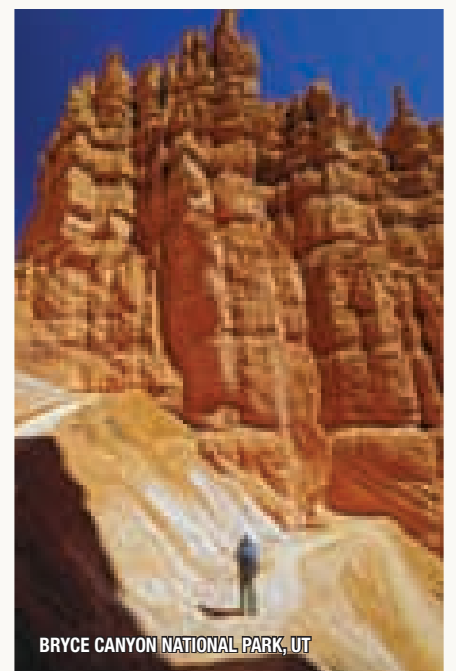
ZION NATIONAL PARK, UT

In the northwest arc of the Grand Circle, a wondrous geologic ladder steps from the bottom of the Grand Canyon to raised tablelands of southwestern Utah. This Grand Staircase—the Chocolate, Vermilion, White, Gray, and Pink Cliffs—spans five different life zones from Sonoran desert to pine and spruce forests. It is a masterpiece of geological and biological diversity, encompassing Zion, Bryce, and Capitol Reef National Parks plus many other attractions.

Within the Grand Staircase, you travel between totally unique, contrasting landscapes. Zion's

main canyon is a green oasis fed by waterfalls cascading down 2,000-foot sandstone cliffs. Bryce Canyon is actually one face of a plateau that is slowly eroding away, leaving behind amphitheaters with thousands of delicate spires and minarets. Vast oceans of red-gold rock undulate through both Grand Staircase-Escalante National Monument and Capitol Reef. And enormous tracts of lush national forest weave among the Parks offering welcome respite from the heat of lower elevations.

This is one of the Grand Circle's finest year-round playgrounds. The National Parks offer hiking



BRYCE CANYON NATIONAL PARK, UT

trails up icy streams and into slot canyons, through arid amphitheaters of crumbling stone and beneath fabulous arches, over geologic folds in rock and across bristlecone-studded forests. National forests and BLM lands offer other ways to explore these lands as well: mountain biking, backpacking, and ATV activities abound in summer; nordic skiing and

The

Grand Staircase



BRYCE CANYON NATIONAL PARK, UT

snowmobiling in winter. Thin Scenic Byways snake between these points, twisting up hogbacks, across alpine meadows, and plunging down into small communities along the way.

Zion National Park.

Nature at its most eloquent, Zion is a place of towering sandstone cliffs, narrow slot canyons, spectacular arches, intermittent waterfalls and seeping springs. Originally inhabited by both Ancestral Puebloans and Paiutes, Zion received most of its colorful place names from early travelers and settlers. Gentle strolls or strenuous hikes allow exploration of the main canyon, with its emerald pools and wooded valley, its upper reaches of sandstone and open desert,

or nearby Kolob Canyon, where a 14-mile hike (roundtrip) will take you to the world's largest stone arch.

Zion is most definitely a photographer's paradise. Shuttles run into the Park from Springdale from April through November; private vehicles allowed offseason. 435-772-3256, www.nps.gov/zion; for Park lodging, 303-297-2757, www.zionlodge.com

Cedar Breaks National Monument.

A miniature Bryce Canyon, this amphitheater spans some three miles, and drops 2,000 feet off the plateau toward the town of Cedar City. In summer, the high rim of the canyon

is dazzling with verdant forests and brilliant wildflowers. Hiking only along the rim. Open late May through mid October. 435-586-9451.

www.nps.gov/cebr

Nearby communities:

Springdale is within walking distance of Zion's visitor center; in fact, shuttles run from town into the Park much of the year. Fun motels, hotels and B&Bs, some excellent small restaurants, and an IMAX film theater make this a comfortable year round community.

St. George, 45 minutes from Zion is a resort community and golf haven with over 10 courses. It has numerous



ZION NATIONAL PARK, UT

hotels and restaurants, and some wonderful historic architecture.

www.atozion.com

Kanab, also listed on page 9, is less than 40 miles from Zion's eastern entrance.

www.kaneutah.org

Cedar City, near Zion, is a bustling college town best known for its **Utah Shakespearean Festival**. Winner of the 2000 Tony Award for Outstanding Regional Theater, the Festival delights audiences with Shakespeare, Broadway, and more from mid-June to late October.

www.scenicsouthernutah.com

Brian Head Resort.

Challenging mountain biking in summer and fun skiing in winter,

18

Brian Head also offers some of the finest views in western Utah. For serious bikers, begin at the Brian Head Lookout Tower and bike down to Panguitch Lake, a descent of several thousand feet. Shuttles available from bike shops in both Cedar City and Panguitch.

www.scenicsouthernutah.com

Bryce Canyon National Park.

Bryce's original inhabitants, the Paiutes, believed that the rock figures here were people turned to stone by angry gods. Delicately colored spires, fins, and mazes haunt our imagination and beckon us to explore them more closely. Hiking and horseback trails wind through the Park, both along the rim and down amongst the towering rock formations called hoodoos. A

www.grandcircle.org

shuttle system (late May through mid-September) connects all major natural amphitheaters along the eastern rim; private vehicles are allowed off-season. Evening rodeos, flight-seeing, mountain biking, cross country skiing trails on outskirts of Park. 435-834-5322, www.nps.gov/brca; for Park lodging and concessions, 877-386-4383, www.Travel-Forever.com/14gctp.

Red Canyon. Just minutes from Bryce, a new visitor center showcases the Dixie National Forest. It offers an excellent hiking and biking trail that loops from the top to the bottom of this Forest Service canyon. The trail runs along the recently designated scenic Hwy. 12, an All-American Road. Shuttles, bike rentals available nearby.

www.fs.fed.us/dxnf/recreation/redcanyon/

www.brycecanyoncountry.com



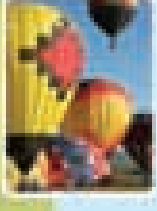
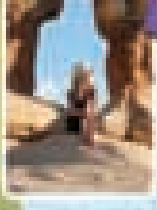
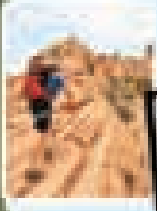
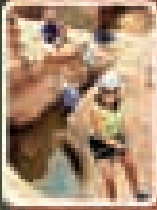
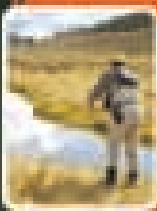
SCENIC BYWAY 12

Scenic Byway 12, Utah's first All-American Road takes you to the heart of the American West. This exceptional 124-mile route negotiates an isolated landscape of canyons, plateaus, and valleys ranging from 4,000 to 9,000 feet above sea level. You'll encounter archaeological, cultural, historical, natural, recreational, and scenic qualities while driving this exhilarating byway. 124 mi. / 199.6 km Panguitch to Torrey.

Nearby communities:

Tropic and **Panguitch** are friendly towns with motels, casual restaurants, and campgrounds, situated near Bryce National Park.

www.brycecanyoncountry.com



143

TWO NATIONAL SCENIC BYWAYS



12



The world's largest concentration of scenic attractions in one county—Southwestern Utah's Bryce Canyon Country!

Radiant cliffs of **two national parks** tower to kiss an azure sky. Pristine canyons are carved deep into the desert sandstone of our **nation's largest national monument**. **Three state parks** and **National Scenic Byways 12 and 143** provide unlimited recreation with breathtaking beauty—all **located here**, in one county. Discover **Garfield County**.



UTAH'S
Bryce Canyon Country
GARFIELD COUNTY

VISIT US ONLINE: www.brycecanyoncountry.com





**SCENIC BYWAY 143
UTAH'S PATCHWORK PARKWAY**

Utah's newest National Scenic Byway crosses the Dixie National Forest from Panguitch to Parowan, near Cedar City. Cresting the 4,500-ft (1,372-m) pass at Brian Head, the highway passes through six distinct life zones in 51 miles (82 km). It skirts Panguitch Lake and Cedar Breaks National Monument. By day, there are abundant outdoor recreational opportunities and, by night, some of the darkest star-filled skies found anywhere on earth. 51 mi. / 82.1 km

Kodachrome Basin State Park. Red rock chimneys jut upward from the valley floor, perhaps originally springs which eventually filled in. As softer surrounding sandstone eroded, the chimneys remained. 435-679-8562.

www.stateparks.utah.gov

Dixie National Forest. Covering 2 million-acres, the National Forest encompasses three lovely plateaus, reaching elevations of 11,000 feet. Tall forests and open meadows, brilliant red rocks, lakes and rivers dot the forest. Hiking, biking, ORVs, fishing, horseback



SCENIC BYWAY 12, UT

riding, and skiing abound. 435-676-2676. www.fs.fed.us/dxnf

Calf Creek Recreation Area. This small creek offers a chance to view native rock art and hike to a lovely waterfall. 12 miles east of Escalante on Rte 12. 435-826-5499

Grand Staircase-Escalante National Monument. Extending across a breathtaking 1.9

million acres, the Monument represents a unique combination of archaeological, geological, paleontological, and biological resources. These strikingly beautiful and scientifically important lands are divided into three distinct regions: the Grand Staircase, the Kaiparowits Plateau, and the Canyons of the Escalante.

Nearby communities: Escalante and Boulder border the sprawling National Monument and Dixie National Forest. They offer excellent access to both. Small and friendly towns, they each have motels, fine B&Bs and several restaurants. Torrey and Bicknell, right off Capitol Reef, are slightly more developed, with numerous hotels and some fun dining.

Managed by the Bureau of Land Management, the Monument is a multi use area allowing hiking, mountain biking, horseback riding, and backpacking/camping. Permits required for overnight use are



CEDAR BREAKS NATIONAL MONUMENT

available at offices in Cannonville, Escalante, Boulder, Big Water and Kanab. 435-826-5499.

www.ut.blm.gov/monument

Fishlake National Forest.

Located north of Dixie National Forest, Fishlake is particularly noted for hunting, fishing, and its 250-mile long Paiute ATV trail. Richfield, UT offers easiest access for the trail.

www.fs.fed.us/r4/fishlake

Capitol Reef National Park.

The Waterpocket Fold, an enormous wrinkle in the earth's crust known as a monocline, forms the 100-mile long backbone of this Park. Early explorers described it as an impassable reef of rock, coining the park's name. The Park's Visitor Center is located in an oasis enjoyed

for millennia. Pre-European rock art and early settlers' orchards grace the area. Scenic driving, hiking, backpacking, mountain biking, and horseback riding allowed in the Park. 435-425-3791.

www.nps.gov/care,
www.capitolreef.org



NEBO LOOP SCENIC BYWAY

From Nephi to Payson, this Scenic Byway has instead breathtaking views of the Wasatch Range and 11,877-foot Mt. Nebo, its tallest mountain. See flat bottomlands, high-alpine conifers, red rock formations, gray sandstone cliffs and salt flats all in the same day. Sights include Devil's Kitchen, Walker Flat and Mt. Nebo Wilderness. 37 mi. / 59.5 km, Payson to Junction, Highway 132 (near Nephi)

Nearby communities:

Bicknell and **Torrey**, right off Capitol Reef, has numerous hotels

Your Adventure Awaits

SOUTHWEST ADVENTURE TOURS

800-970-5864

www.southwestadventuretours.com

Discover THE Ahh IN SOUTHERN UTAH!

Cedar City Brian Head UTAH

www.ScenicSouthernUtah.com

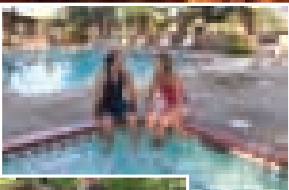
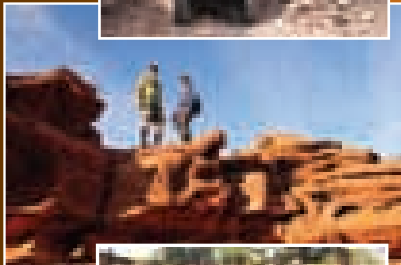
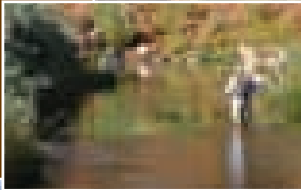
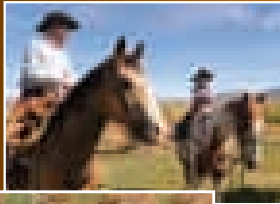
1-800-354-4849

Cedar Breaks National Monument Kolob Canyons Neil Simon Festival Home of the Tony Award Winning Zion National Park Brian Head Resort Dixie National Forest Utah Shakespeare Festival



CAPITOL REEF COUNTRY

Wayne County, Utah



**OUR SECRET IS
NOW YOURS**

**www.CapitolReef.travel
435-425-3365**

and some fun dining.
www.capitolreef.org,

Anasazi State Park Museum.
One of the largest Ancestral Puebloan communities west of the Colorado River, the site was occupied from A.D. 1050 to 1200. The village remains largely unexcavated, but many artifacts have been uncovered and are on display. Boulder, UT.
www.stateparks.utah.gov

Goblin Valley Sate Park.
Whimsical rocks eroded into what appear to be goblins, and these and other fanciful creatures greet visitors in this vast sandstone bowl. Near Canyonlands National Park. 435-564-3633.
www.stateparks.utah.gov

Great Basin National Park.
Located west of the Circle in Nevada, the Park offers a staggering diversity of terrain from lowland sage to the 13,000 foot Wheeler Peak and numerous limestone caverns. **Lyman Caverns** offers two guided tours through spectacular and dramatic caves daily. 775-234-7331.
www.nps.gov/grba



LAS VEGAS STRIP

Las Vegas Boulevard is America's only nighttime Byway and possibly the most concentrated collection of neon and lights in the world. A trip down the Strip is an all-inclusive way to experience the heart of Las Vegas — an adventure that captures 75 years of history, glitz, and roadside charm. 4.5 mi. / 7.2 km in Las Vegas.



CAPITOL REEF NATIONAL PARK, UT

www.grandcircle.org

CANYON STEWARDSHIP

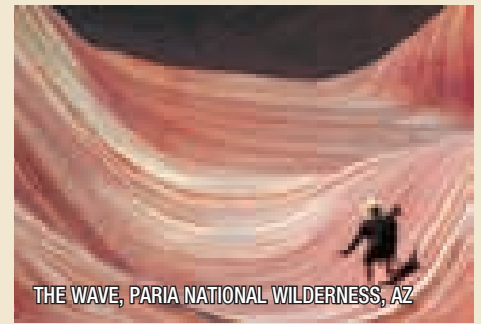
LEAVE NO TRACE.

PACK IT IN, PACK IT OUT. Remember, nothing disintegrates out here, nothing. It's just too dry. We still find corncobs and plant fibers from clothing worn centuries ago. Whatever you leave behind will decorate this landscape for years to come: orange peels and cigarette butts and toilet paper. Bury human waste. Don't litter.

RESPECT WATER. Water is life itself here in the desert southwest. When you are delighted to find water, imagine how much more so are the local creatures. Your skin has soaps and lotions that will foul the water - don't bathe directly in waterholes or clear streams. Don't use up the available liquid by splashing about carelessly. Camp, wash dishes, and urinate at least 200 feet from any limited water source. And always, always use a water filter if you decide to take a drink.

TREAD LIGHTLY. Stay on official trails or, when that's impossible, on hard rock surfaces. Soil with dark, crumbly crusts on it is called "cryptobiotic"- it's actually made up of organisms that bind the soil together, making it resistant to wind and erosion and encouraging other plantlife to take root. Footprints or tire tracks pulverize these delicate crusts, setting back revegetation literally years.

PRESERVE THE PAST. Ancient sites and rock art panels abound in the Circle; many are more than 700 years old. Crumbling walls may collapse if you lean or climb on them; fragile flakes of stone or paint will absorb oils from your fingers and soon discolor or disappear. Corncobs and pottery sherds lying about are all part of the peaceful story of these sites - leave them undisturbed for the next visitor or scientist.



Fahnestock Sand Dunes
Reno
Fallon
Austin
Eureka
Elko
Ash Grove Caves
Eureka Opera House
NEVADA
Dry D. Good Train
Great Basin National Park
Pony Express
TERRITORY
PonyExpressNevada.com
775-433-4556 • 888-359-0440
WHAT'S HOLDIN' YOU UP?

Monuments and

CANYONLANDS NATIONAL PARK, UT

Snow fed rivers drain from the western slope of the Rocky Mountains to carve the canyons of the Colorado River Basin polished works of geologic art. Extending from Colorado's Black Canyon of the Gunnison National Park and Colorado National Monument on the Grand Circle's eastern fringe through Utah's famed Parks Canyonlands, Arches, Monument Valley is an empire of astonishing cliffs and canyons, mountains and mesas. It is a land that invites us to wander and wonder, hike, bike, boat, float, jeep, ride, fly, climb, ski, photograph, or just sit and absorb its timeless beauty.

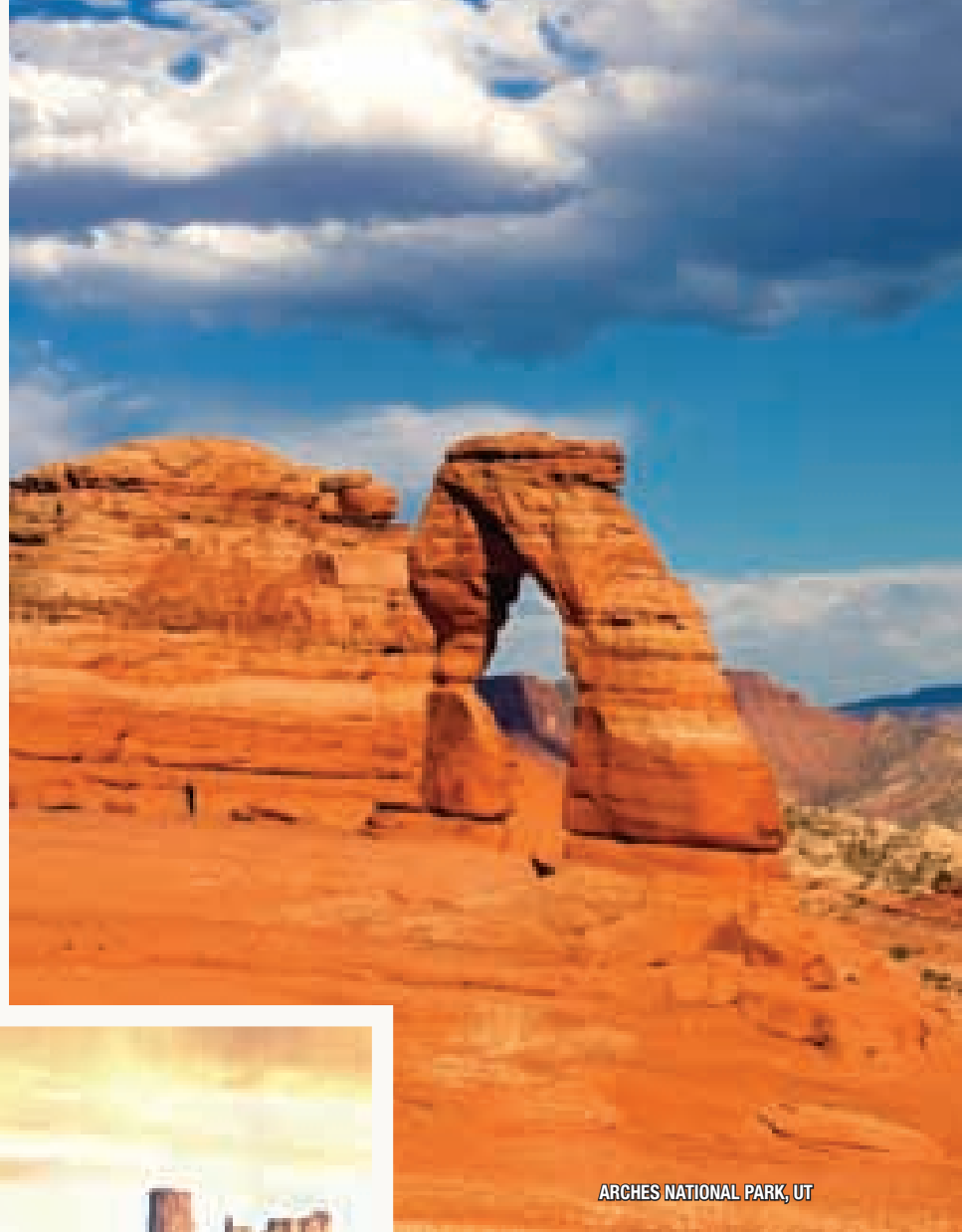
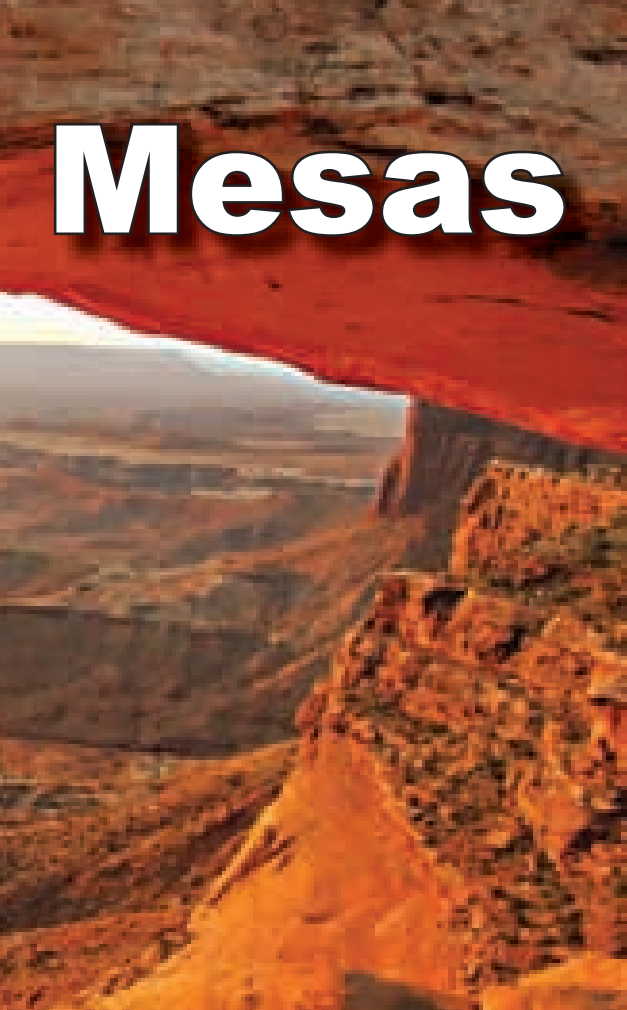
Each canyon and season offers unique treasures g raceful cottonwoods blazing yellow in the autumn months, canyon wrens calling in spring. Sitting quietly on a smooth sandstone ledge next to a centuries old site and absorbing the afternoon sun (hot in summer, welcomingly warm in winter), you'll understand how people felt a thousand years ago: completely at peace. Bike across slickrock, testing your nerves and muscles, continuing on for miles because it's just too beautiful to turn back. Join a dinosaur dig. Jeep into the cool green mountains of the La Sals or the Abajos, or onto Grand Mesa. Visit a vineyard. Raft the rivers splash and play under the Grand Circle's stunning blue skies.

Colorado Canyons National Conservation Area. This scenic and fossil-rich area is accessible for hiking, horseback riding, mountain biking (on some trails only), and off roading (Rabbit Valley only). Black Ridge Canyons Wilderness, with seven major red rock canyon systems, has the second largest concentration of arches anywhere in the world. As with all wilderness areas, no mechanized vehicles are allowed. 970244-3000.

www.co.blm.gov

Colorado National Monument. Celebrating 100 years since designation, this National Monument is comprised of towering red sandstone monoliths and deep, sheer-walled canyons offering

Mesas



ARCHES NATIONAL PARK, UT



MONUMENT VALLEY, AZ, UT

beautiful driving and hiking along the 23-mile Rim Rock Drive. Trails also meander down into the canyons. Just west of Grand Junction. 970-858-3617. www.nps.gov/colm

Grand Mesa National Forest. The world's largest flat-topped mesa laced with small lakes, excellent fishing streams, and hiking, biking, and riding trails. 45 miles northeast of Grand Junction on I-70 and Hwy 65. 970.242-8211. www.fs.fed.us/r2/gmug

Nearby Communities: Grand Junction makes a wonderful central point from which to explore these monuments, mesas and museums. It is known as a paleontologist's playground, home to the greatest diversity of prehistoric bones ever recovered. Full of restaurants, accommodations, shops, even vineyards. Dinosaur Journey Museum is a wonderful stop for adults and kids alike - robotic dinosaurs, bones and skeleton casts, a working lab, a kids quarry, and 1-3 day adult digs. 800-962-2547. www.visitgrandjunction.com



- 1 NEVADA
- 1 LAS VEGAS STRIP
- 2 UTAH
- 2 NEBO LOOP SCENIC BYWAY
- 3 THE ENERGY LOOP:
HUNTINGTON / ECCLES
CANYONS SCENIC BYWAY
- 4 FLAMING GORGE-UINTAS SCENIC BYWAY
- 5 DINOSAUR DIAMOND
PREHISTORIC HIGHWAY
- 6 SCENIC BYWAY 12
- 7 SCENIC BYWAY 143
UTAH'S PATCHWORK PARKWAY
- 8 TRAIL OF THE ANCIENTS SCENIC BYWAY
- 9 COLORADO
- 5 DINOSAUR DIAMOND
PREHISTORIC HIGHWAY
- 8 TRAIL OF THE ANCIENTS SCENIC BYWAY
- 9 GRAND MESA
SCENIC AND HISTORIC BYWAY
- 10 SAN JUAN SKYWAY
- 11 ARIZONA
- 11 KAIBAB PLATEAU-NORTH RIM PARKWAY
- 12 HISTORIC ROUTE 66
- 13 RED ROCK SCENIC BYWAY
- 14 NEW MEXICO
- 12 HISTORIC ROUTE 66
- 14 JEMEZ MOUNTAIN TRAIL
- 15 EL CAMINO REAL SCENIC BYWAY
- 16 TURQUOISE TRAIL
NATIONAL SCENIC BYWAY

MAP LEGEND

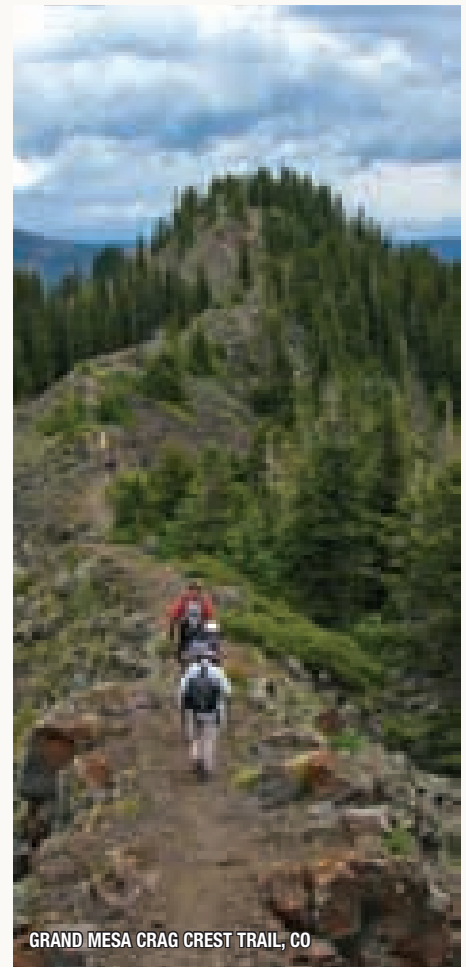
100 miles
150 kilometres

- # All-American Road
- # National Scenic Byway
- Interstate
- Interstate Scenic Byway
- National Scenic Byway
All-American Road
- Major Highway
- Secondary Highway
- Pending Scenic Byway





COLORADO NATIONAL MONUMENT, CO



GRAND MESA CRAG CREST TRAIL, CO



DINOSAUR DIAMOND PREHISTORIC HIGHWAY

The Dinosaur Diamond runs through the best land in the world to learn about dinosaurs. Numerous sites are available to the public where bones and tracks are still visible in the ground. Many museums along the way add to the opportunities to see and learn about dinosaurs. 480 mi. / 772.5 km Circle – Grand Junction, CO to Moab, UT to Grand Junction, CO.

Ridgway, also near the Black Canyon of the Gunnison, serves as a great base-camp for exploring the heart of Southwest Colorado and incredible outdoor recreation.

www.ridgwaycolorado.com

Black Canyon of the Gunnison National Park. One of our newest national parks was formed slowly by water and stones scouring down through hard, dark crystalline rock.

No other canyon in North America combines the narrow opening, sheer walls, and startling depths offered by this gorge. Rim drives and hiking trails with scenic views; trails to the bottom only for the very experienced hiker. 15 miles east of Montrose, CO, off US 50. 970-641-2337.

www.nps.gov/blca

The small, friendly town of **Montrose** is close to the Black Canyon, and has more than a dozen motels to choose from. There s also an excellent small Ute Museum with information about this indigenous Western Slope tribe. 970-249-5000.

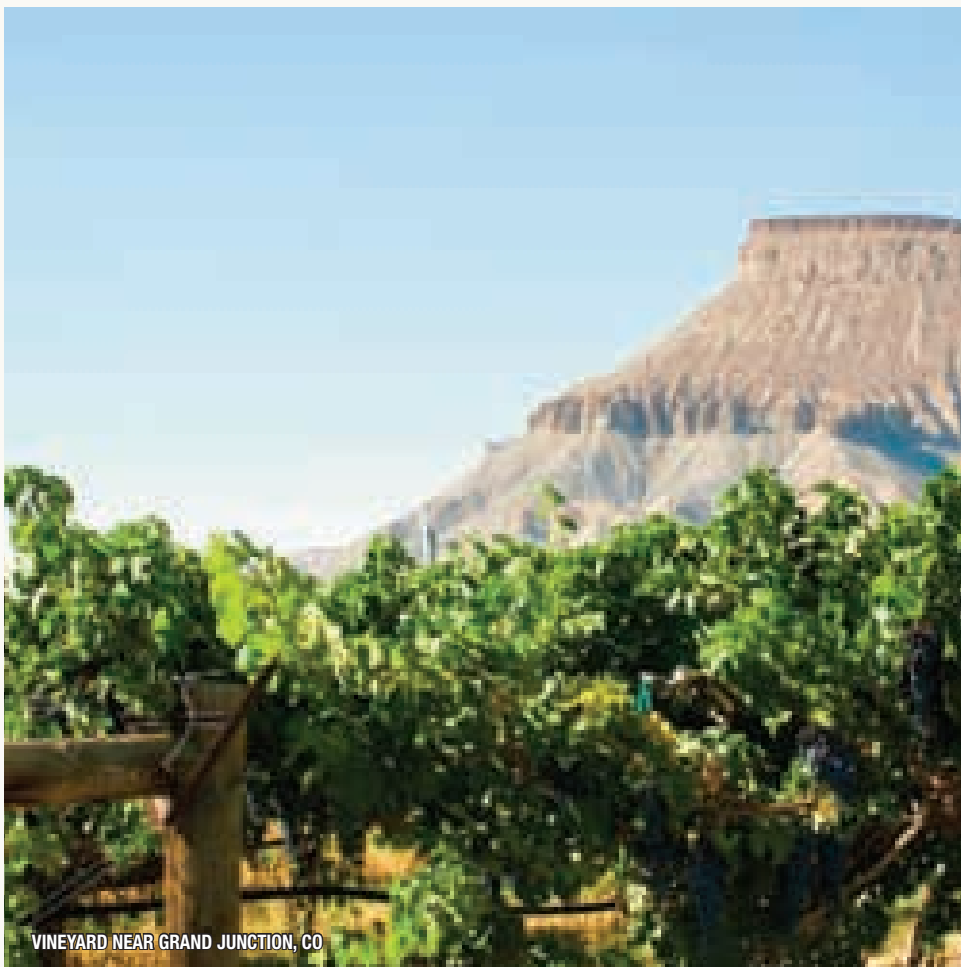
www.visitmontrose.com

Gunnison National Forest was named for Captain John Gunnison, a man who came through this area in 1853 in search of a feasible route across the Continental Divide for a railroad. The present Forest consists of over 1.7 million acres of public land and over 100,000 acres of private land within its boundaries. There are 2 peaks over 14,000 and another 20 that are over 13,000 in elevation. Most campgrounds in the Forest are designed to accommodate campers, tents and small trailers (up to 18 feet long). Length-of-stay limits are posted on the bulletin boards in the campgrounds



GRAND MESA SCENIC AND HISTORIC BYWAY

This “playground in the sky” climbs from the rugged Plateau Canyon floor to the cool evergreen mesa forests, 11,000 feet up. Featured are hundreds of sparkling lakes, wildflower meadows and forests of shimmering aspen and pine. Take a side trip to Lands End Overlook where the Grand Valley unfolds below. 63.0 miles / 101.4 km. I-70 to Cedaredge with spur to Lands End.



VINEYARD NEAR GRAND JUNCTION, CO

Delta County
COLORADO

Whet Your Appetite for
an Exciting
Grand Circle Adventure.
Take a Bite Here!

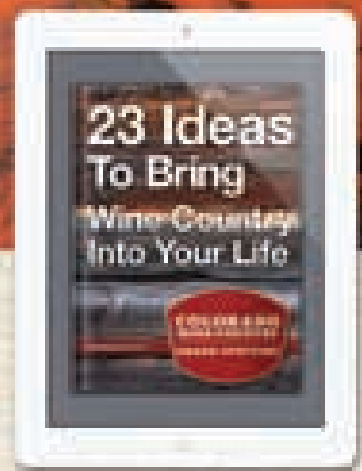
Free Visitor Map & Guide
1.877.825.7514
www.westerncolorado.org

BE INSPIRED. THEN BE AMAZED.



If a picture looks this good, imagine it in person. Be inspired by Grand Junction's Wine Country eBook. Then while driving our scenic byways. Download 23 interactive ideas, then plan your trip to the Grand Circle and the red rock canyons of the Colorado National Monument today at VisitGrandJunction.com.

Download our eBook. Now available online or for iPad and Kindle.



and the usual limit is 14 days. User fees are charged in some recreation areas that are identified by signs at their entrances. People are also still finding undiscovered Anasazi ruins in the Forest. If you come across ruins, please leave them undisturbed and report your discovery to the appropriate Forest Service personnel. In this area, we are learning much about our Native American heritage through the study of previously unknown and undisturbed sites and artifacts..

www.nps.gov/azru

Arches National Park. More than two thousand natural sandstone arches, including the world-famous Delicate Arch, frame this area's amazing beauty. In some areas, faulting has exposed millions of years of geologic history. An 18-mile paved loop road introduces visitors to a brilliantly colored landscape littered with fins, pinnacles, faults and fossils; hiking trails wind under arches and around windows in stone. 5 miles north of Moab

on Hwy 191. 435-259-8161.

www.nps.gov/arch

Canyonlands National Park.

Countless canyons, mesas and buttes comprise the three separate districts of this Park: Island in the Sky, the Needles, and the Maze (very difficult access). Each is special. Near Moab, short hiking trails loop through Island in the Sky as raft trips float thousands of feet below to the confluence of the Green and Colorado Rivers. Grand View Point, about 30 miles from Moab, offers a 360 degree panoramic view of the deep canyons below. Off road vehicles and bikes are permitted on the 100-mile White Rim Trail. The Needles District north of Monticello offers a very different beauty with remote loop hikes to spectacular red rock gardens. 435-719-2313.

www.nps.gov/cany

Dead Horse Point State Park. On the same mesa as Canyonlands Island in the Sky, 2,000 feet directly above the Colorado River, Dead Horse Point provides a breathtaking panorama of Canyonlands' sculptured pinnacles and buttes. 435-259-2614.

www.stateparks.utah.gov

Manti-La Sal National Forest. Home to the La Sal (near Moab) and Abajo (near Monticello) Mountains, this Forest offers outstanding recreation in cooler temperatures. Wonderful scenic drives snake through these two different ranges, offering views of the surrounding desert floor.



**THE ENERGY LOOP:
HUNTINGTON/ECCLES
CANYONS SCENIC BYWAY**

The Energy Loop: Huntington/Eccles Canyons Scenic Byway winds across the Manti-La Sal National Forest, rising up to 10,000 feet above sea level. Explore the rich history of industrial development as you view coal mining operations, historic mining



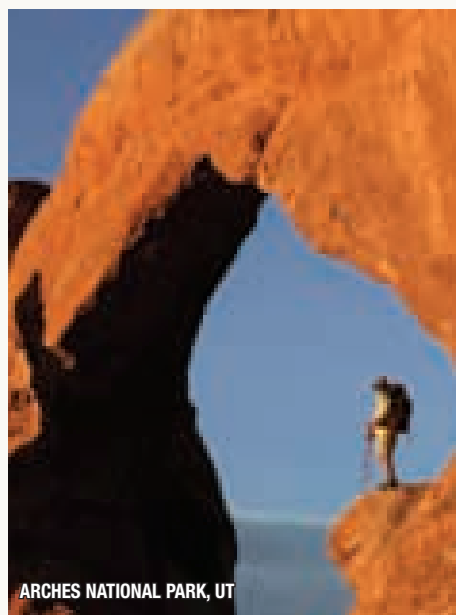
DEADHORSE POINT STATE PARK, UT

towns, and coal-fired power plants. Nearby Sanpete Valley contains some of the best-preserved Mormon Pioneer settlements in existence. 86 mi. / 138.3 km Colton to Huntington.

Newspaper Rock National Recreation Site. One fabulous wall of Ancestral Puebloan and Ute petroglyphs (art chiseled and pecked into stone) is located on the road into Needles District of Canyonlands. 435-587-1500

Nearby Communities: Moab is a vibrant town known for its world class slick rock mountain biking. But there's more rafting, boat tours, aerial trams, flight seeing, golf, and glorious, solitary hikes, and one of the best breweries in Utah. Lots of lodging and restaurants, some campgrounds. For the southern entrance to Canyonlands Needles District, Monticello is close and is nestled at the foot of the lovely Abajo Mountains. It has a multi-agency visitor center, motels and restaurants. Websites: www.discovermoab.com,

Monument Valley Navajo Tribal Park. Perhaps the most photographed landscape in America, this valley of



Two National Parks: One Destination MOAB
WHERE ADVENTURE BEGINS

With easy access to Arches and Canyonlands National Parks, Great Horned Owl State Park, the Colorado River, and thousands of square miles of amazing red rock landscapes waiting to be explored, a vacation in Moab, Utah delivers nonstop fun and excitement for your entire family.

While you explore the most unique scenery in the American Southwest, take some time to relax and experience the hospitality of the small resort town of Moab. Our great selection of lodging and restaurants will make planning your perfect vacation easy!

To request a free copy of our Moab Travel Planner, call 800-435-6637 or visit discovermoab.com

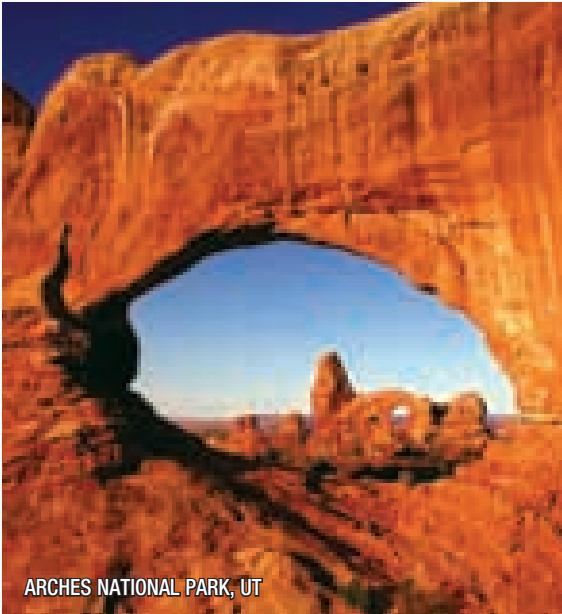
San Juan County, Utah

Put yourself in the picture!
And discover the
World's Greatest
Outdoor Museum!

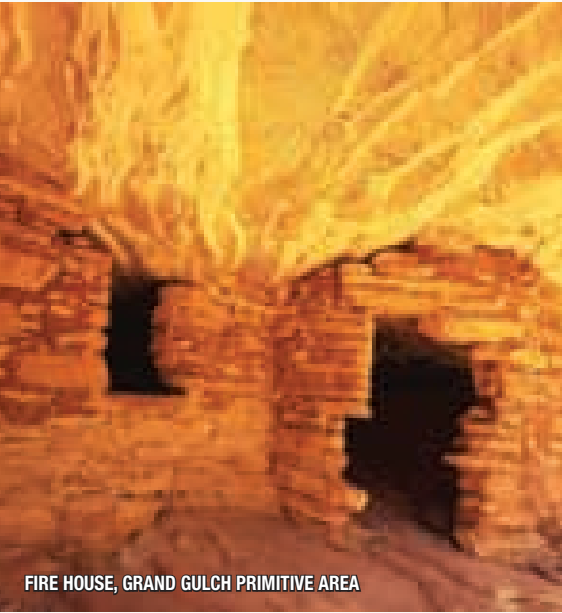
UTAH

www.utahscanyoncountry.com

800-574-4386



ARCHES NATIONAL PARK, UT



FIRE HOUSE, GRAND GULCH PRIMITIVE AREA



MONUMENT VALLEY NAVAJO TRIBAL PARK, AZ, UT

monoliths and buttes has been a favorite Hollywood backdrop for 80 years. Still a traditional Navajo homeland, the valley is accessible by private vehicle and guided tours on limited roads. Horseback tours are also available. No backcountry hiking or biking is allowed.

Gooulding s, the area s first trading post, has a fine small museum on early trading days.

www.utahscanyoncountry.com

www.navajonationparks.org

Goosenecks State Park. A stunning overlook views an ancestral entrenched meander, deep, looping S-curves carved by the San Juan River. 18 miles south of Bluff, UT off Hwys 191 & 261.

<http://parks.state.ut.us/parks/www1/goos.htm>

Grand Gulch Primitive Area. Hundreds of Ancestral Puebloan cliff dwellings and rock art panels dot the canyons off Cedar Mesa for avid day hikers and backpackers to enjoy. Hiking & camping permits required; no off road vehicles allowed. Off Hwys 95 and 261, 30 miles south of Blanding, UT.

www.blm.gov/utah/monticello

Natural Bridges National Monument. Unlike arches, bridges are formed when streams cut through canyon walls. Three lovely bridges in one canyon, all accessible by short, steep hiking trails, are protected here. 36 miles west of Blanding, UT, off Hwy 95. 435-692-1234.

www.nps.gov/nabr

Valley of the Gods. A landscape that rivals Monument Valley, but is more accessible for driving, hiking, camping, and biking (controlled by BLM). 12 miles south of Bluff, UT. 435-587-1500.

Nearby Communities: Historic Gooulding s Lodge, known as a western fort or town setting of many John Wayne movies, is one mile from the rim of Monument Valley. It offers accommodations, a restaurant, campground, a museum, grocery store, fast food, and flight-seeing. Twenty five miles south of the valley is **Kayenta, AZ**, on the Navajo Reservation, with several hotels and small restaurants. North of the valley, in Utah, are Mexican Hat, Bluff, and Blanding. **Blanding** is the largest, with several motels and restaurants. A recently opened visitor center offers area information. **Bluff**, though small, is charming with historic Mormon homes, lots of outfitters and rafters, and a few outstanding trading posts to complement its three motels and several B&Bs. **Mexican Hat** has three small motels and restaurants and is located on the San Juan River. Sheltered by the Abajo Mountains, **Monticello** has several hotels and motels and has a full range of dining options.

www.southeastutah.org

Trading posts began in and around the Navajo Reservation in the late 1800s. Traders offered standard fare - coffee, sugar, milled flour, cotton and velvets - in return for bartered trade goods like wool, mutton, and weavings. Often, the clients needed credit until their harvesting season arrived. Navajos did not believe in, nor have access to, banks. Instead, they would acquire as much heavy silver and turquoise as they could afford. Many older people still keep their wealth in silver and turquoise jewelry, and often wear most of it. Credit accounts were set up by traders; family jewelry was then pawned to (or deposited with) traders to guarantee eventual payment. It did not benefit traders - most of whom were committed to long term relationships with their clients - to sell this pawn indiscriminately as that would have just offended the family and community. The tradition continues: it's still a reliable way to get cash fast - one pawns something for less than 20% of its real value, to be sure that the loan can be



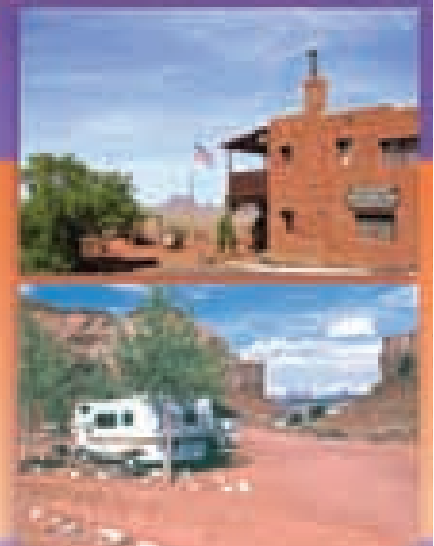
paid back easily. However, pawn now typically goes through merchants in non-reservation towns, as they are only required to hold it a few months before reselling. Pawn does not mean "old." Though it may cost more because of perceived value, it may not be worth more. As with all art, unless you really know your market, buy items you like, not items you think are valuable.

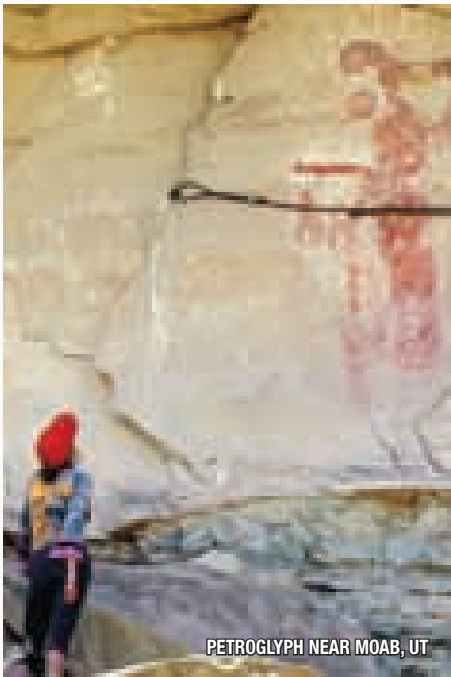
YOUR INVITATION TO
NAVAJOLAND

GOULDING'S LODGE MONUMENT VALLEY

- Guided Tours of Monument Valley
- Lodge Accommodations
- RV Park & Campground
- Trading Post Museum
- Grocery Store & Gas Station
- Stagecoach Dining Room
- Earth Spirit Multi-Media Show
- Goulding's Arts and Crafts Boutique

P.O. Box 360001
 Monument Valley, Utah 84536
 Phone: (435) 727-3231
 Fax: (435) 727-3344
 Email: gouldings@gouldings.com
www.gouldings.com



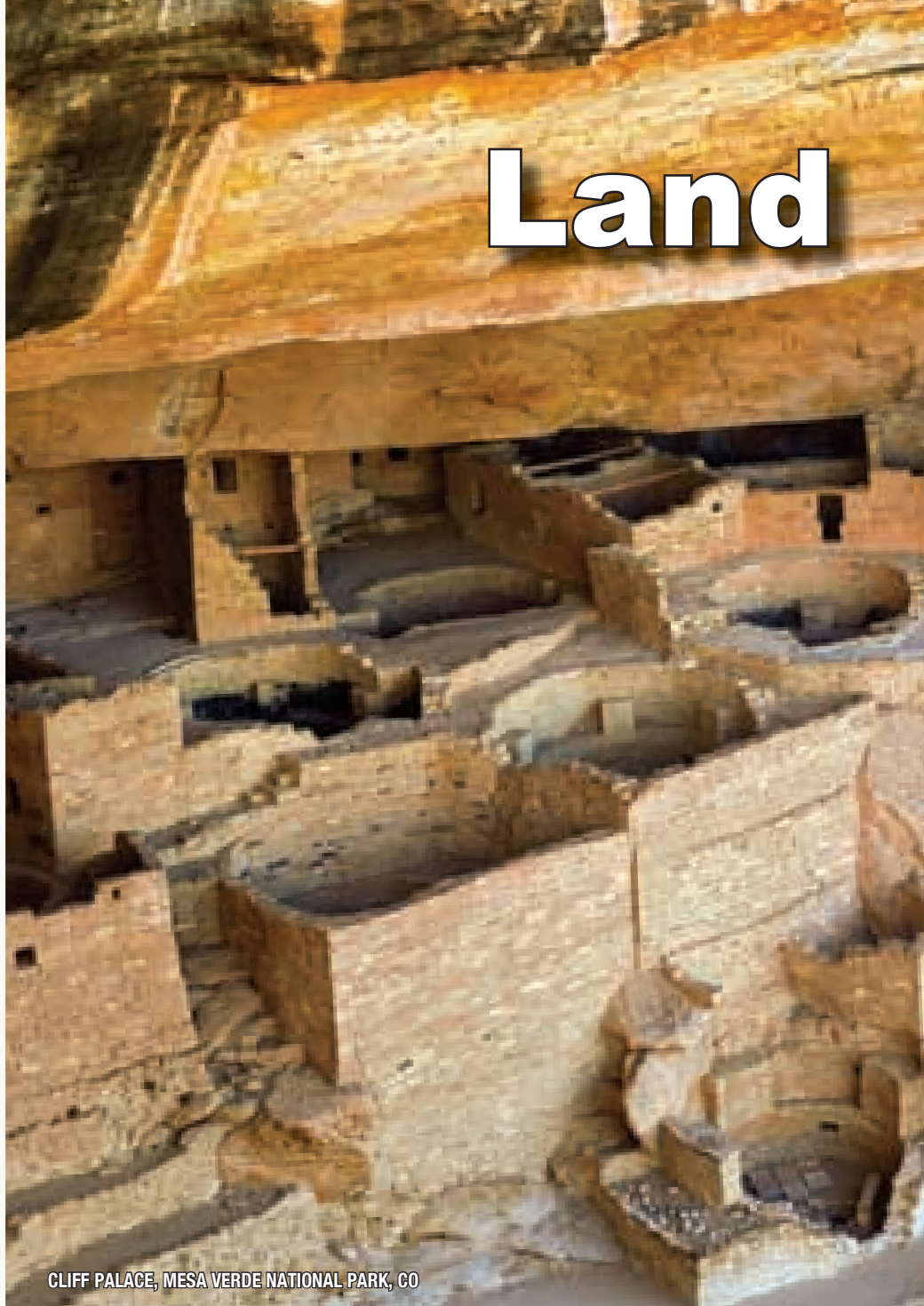


PETROGLYPH NEAR MOAB, UT

Human history seeps from the pores of this land generations of nomads, farmers, builders, warriors, explorers, traders, miners, and ranchers have traipsed the Colorado Plateau and called it home. Nowhere is this more evident than in the southeast corner of this Grand Circle where remote canyons have nurtured civilizations for hundreds of years.

Tens of thousands of people once lived here, building villages along every creek and near every small, life-giving spring. Travel for a day in this part of the Circle and you'll see their traces: small granaries tucked inconspicuously up under rock outcroppings, circles of sunken stones still noting kivas, places of ceremony. Remnants of their homes litter sage-covered plains and mesas. But time and water those same sculptors of the canyons wreak havoc on ancient walls. One of the Grand Circle's newest national monuments, **Canyons of the Ancients**, was recently created to help protect some of these fabulous sites.

The best-known treasures here are **Mesa Verde**, Chaco Canyon, and Canyon de Chelly. Mesa Verde first caught explorers' attention because it's so well preserved: whole towns protected from weather because they were built in high, dry cliff alcoves. Brooms and sandals, grinding stones and dog-hair weavings capture images of life 800 years ago. Archaeologists



CLIFF PALACE, MESA VERDE NATIONAL PARK, CO

thought for years that Mesa Verde was this society's nucleus but, as it turns out, that high plateau was merely a satellite of a far more organized, far more powerful community: **Chaco**. Apparently the trading and religious center of the Ancestral Puebloan world, Chaco's trade spread from the Pacific to the Mississippi to Meso America. Over hundreds of years, Chacoans created enormous villages and ceremonial structures, as well as precise solstice markers and elaborate irrigation systems. On the western side of the Chuska Mountains, **Canyon de Chelly** was less developed, less

populated during Puebloan times, but has been occupied since by other native peoples. The Navajo still farm and raise sheep in this magical canyon through a unique partnership with the National Park Service.

Where did the builders of these sandstone cities go? It appears that, by 1300, all the Ancestral Puebloans of this area had migrated south to join with other communities of kin the Rio Grande Pueblos, the Acoma, Zuni and Hopi peoples possibly forced from this area by cooling weather and dwindling resources. Their traditions live on today though, in the

Land

of Ancients



arts and rituals spread throughout New Mexico and Arizona.

65 miles west of Albuquerque is **Acoma Pueblo** and the **Sky City Cultural Center**. Dating to the 13th century, Acoma Pueblo is the oldest continuously inhabited settlement in North America and the 28th Historic Site designated by the National Trust for Historic Preservation. Its rich history is on display at the Haak u Museum, features exhibits of a wide array of art and artifacts of the Acoma and other puebloan tribes of the area. Native

American jewelry and the work of contemporary Pueblo artists who create world-renowned pottery are available at the museum. www.officialbestof.com/features/newmexico/2013.php.

Zuni thought to be the famed city of gold, Cibola, the Spanish searched for in 1539 is a simple town surrounded by fields tended for centuries. a wonderful blend of Catholicism and Pueblo beliefs. Two additional National Monuments are near these villages: **El Malpais**, with wonderful volcanic

lava flows and cinders and **El Morro**, which commemorates Inscription Rock centuries of rock art and European explorers signatures. www.nps.gov/elmo. www.nps.gov/elmo

Learn more about NATIVE New Mexico through the New Mexico Tourism Department/Indian Tourism Program www.newmexico.org/native_america/

The **Hopi** live furthest west, isolated on the southern rim of the enormous Black Mesa, the driest place chosen by any Pueblo



NAVAJO TRIBAL PARK, AZ

people. Able to coax corn and beans out of parched earth, ecologists call them environmental wizards. One is not born Hopi, one aspires to become Hopi. Being Hopi is a state of being, of grace, peacefulness, and honesty. Their sacred dances invoke the rains, but also pray for peace and happiness for the entire world. Today, visitors are still allowed to view some dance ceremonies, but not all. Should you be lucky enough to attend one, no photography or recording devices are allowed.

Arts are a part of life for the different Pueblos. Each has become famed for its unique pottery, paintings, katsinas, carved fetishes, and jewelry—either very simple etched silver or delicately inlaid with colored stones. The Hopi Arts Trail—not a literal trail to hike but rather a way for visitors to connect with the wonderful artists and galleries on the Hopi mesas in northern Arizona. The Hopi people have lived in villages on the mesas for over a thousand years and have one of the most uniquely preserved cultures in America. The Arts Trail is an invitation to the world to visit the mesas in a respectful manner and connect with some of the very finest artists in their galleries and home workshops. Visitors are welcome to drive across the Hopi reservation using the Arts Trail map as a guide to visit the galleries and contact artists but, the very best way to tour Hopi for the first time is with a tour guide who is certified by the Hopi Tribe.

www.HopiArtsTrail.com

Utes were undoubtedly the contemporaries of the Ancestral Puebloans, though their small clan, hunter and gatherer style left only scant traces of their centuries old habitation of the southwest. After the Ancestral Puebloans moved away, Utes continued to live along the western slope of Colorado and in the San Juan River basin. In the mid 1600s, after they acquired horses from the Spanish, Utes flourished, becoming fearsome warriors, raiders, and buffalo hunters. But by 1880, the group now known as Southern Utes were only 500 people; the Ute Mountain Utes numbered 650. Today both tribes earn revenues from oil and mineral leases, casinos, and tourism. The **Ute Mountain Tribal Park**, wrapped around the base of Mesa Verde, contains worldclass archaeological sites for visitors to tour with Ute guides. www.utemountaintribalpark.info

Of all the tribes, the Navajo dominate the political and physical landscape. With more than a quarter million tribal members, and more than seven million acres of reservation land spread across three states, the Diné are a powerful nation. Relative newcomers to the southwest—they are believed to have migrated here in the 1400s—the Navajo language is similar to Canadian-Athabaskan. Masters of adaptation, the Navajo quickly picked up agriculture, sheep-herding, and weaving for profit from traders. Unlike the Pueblos though, most traditional Diné families choose to live apart from their neighbors. Hogans—one roomed

earthen structures that originally served as homes—often sit next to modern houses, but they're still used and appreciated. Notice how every hogan faces east, to greet the dawn. The traditional arts of the Navajo—sand painting, basket weaving, jewelry making, pottery and rug weaving—have experienced a revival in recent years and are valued by visitors and collectors. Today the Nation has its own unified government and a strong view of the future. www.discovernavajo.com

Mesa Verde National Park. Repeatedly cited as one of the world's top cultural attractions, Mesa Verde was home to the Ancestral Puebloans for more than 700 years. Many of the best-preserved dwellings were built high on cliff walls in alcoves, well-protected from the elements. Complete homes and entire villages have survived with many artifacts amazingly intact, providing visitors a unique and thought-provoking glimpse into America's pre-European past. Self-guided interpretive trails on the mesa's surface, ranger-guided tours of some cliff dwellings, concessions-guided tours and lodging. 602-331-5210.

www.visitmesaverde.com

www.nps.gov/meve

www.mesaverdecountry.com



TRAIL OF THE ANCIENTS SCENIC BYWAY

Explore the long and intriguing occupation of the Four Corners region by Native American peoples. Travel through the archaeological heartland of America while crossing the beautiful and diverse landscapes of the Colorado Plateau. World-renowned Mesa Verde National Park, Monument Valley Tribal Park, Four Corners Monument, Chaco Canyon, Zuni Pueblo, Bisti Badlands, Aztec Ruins National Monument, and Natural Bridges National Monument are highlights on the trail. The Trail of the Ancients is a loop route that may be started at any point along its length. You can begin the loop in Cortez, CO, Monticello or Blanding UT, or along the way. Total length is 480 mi / 772 km.

Anasazi Heritage Center. A wonderful, interactive museum and information center introduces visitors to artifacts and pre-European ruins. The Center is also the headquarters of Canyons of the Ancients National Monument. 10 miles north of Cortez off Hwys 145 & 184. 970-882-4811.

www.co.blm.gov/ahc

NEVER A DULL MOMENT 24/7

Play It All Casino

DURANGO, CO • 888-342-7788
 800-752-6888

*Immerse Yourself
 in the Beauty
 of the
 San Juan
 Mountains*

The Durango & Silverton Narrow Gauge Railroad is designated as a National Historic Landmark, and was named the "Number One North American Train Trip" by National Geographic Traveler.

Visit our Web site for adventure and tour packages, excursion information and special events.
www.DurangoTrain.com | 800-408-2843

Create Your Memories

FROM OUR CORNER OF THE WORLD.

STRATER HOTEL
 DURANGO, COLORADO

**HISTORIC HOTELS
 of AMERICA**

888.237.4411 | Strater.com | 2 Blocks North of D&S Train Station

Event Packages Nightly Entertainment Live Theatre Fine Dining

Cortez Cultural Center. A forum for arts, education, and Native cultures, the Center offers free Indian Dances and Cultural Programs, or the outdoor drama Black Shawl during the summer months. The Center also features exhibits of prehistoric and contemporary Native tribes, as well as rotating art exhibits. 970-565-1151

www.cortezculturalcenter.org

Canyons of the Ancients National Monument. Newly designated to protect thousands of unexcavated archaeological sites, this Monument still lacks significant infrastructure. So far, there is just one interpretive site and two hiking trails. Lowry Pueblo, just north of Cortez, is a self-guided tour. Sand Canyon, off McElmo Canyon Road, has a nice canyon hiking trail that passes several cliff dwellings and Painted Hand Pueblo, a backcountry site, has a beautiful standing tower and pictographs. For information on how to reach these hiking trails, visit the Anasazi Heritage Center. 970-882-4811.

www.co.blm.gov/canm

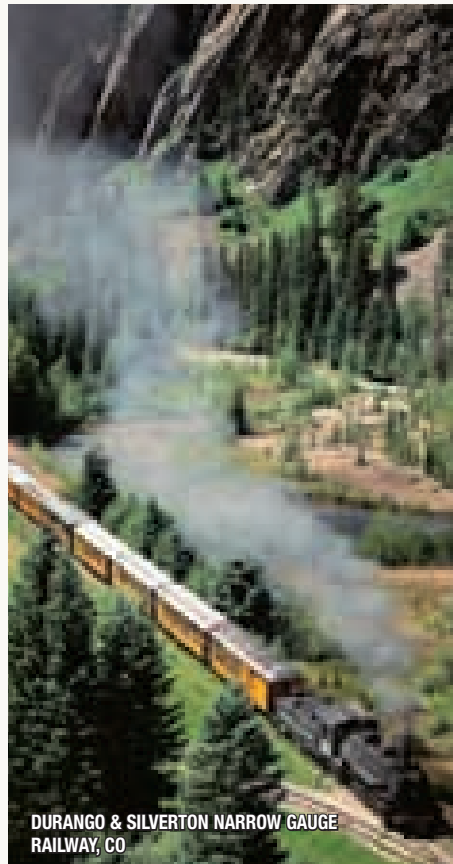
Crow Canyon Archaeological Center. June through August, Crow Canyon offers day-and week-long introductions to the science of archaeology for both kids and adults. Additional programs offered during school year. Cutting edge research has provided many answers and more questions about the Ancestral Puebloan occupation of southwest Colorado. Just north of Cortez, CO, off Hwy 491. 970-565-8975.

www.crowcanyon.org

Durango & Silverton Narrow Gauge Railroad. In the 1880s a narrow rail line was strung along the Animas River, a twisting river gorge, to connect Silverton and Durango. Authentic coal fired steam engines still pull passengers in narrow gauge cars on an incredibly scenic journey. In Durango, CO. 970-247-2733.

www.durangotrain.com

Four Corners Monument. Four states meet at this Monument, surrounded by the Ute and Navajo Nations. Here you can have your photo taken touching four states at one time. 38 miles southwest of Cortez, CO, off Hwy 160.



DURANGO & SILVERTON NARROW GAUGE RAILWAY, CO

Edge of the Cedars State Park Museum. The small museum houses a superb collection of Ancestral Puebloan pottery and artifacts next to an excavated pueblo in Blanding. 435-678-2238.

www.stateparks.utah.gov

Hovenweep National Monument. Five beautifully built ancient towers cluster at the heads of spring-fed canyons in this small, undeveloped park. Their use is still unknown was it for storage? Solstice observation? Defense? Facilities include a Visitor Center and self-guided interpretive and hiking trails. Travel 3 miles south of Cortez, CO. on Hwy 160, then west 39 miles on County Road G (McElmo Canyon Road). 970-562-4282.

www.nps.gov/hove

Ute Mountain Tribal Park. The southern canyons of the Mesa Verde are on Ute lands, and contain wonderful, primitive, unexcavated cliff dwellings and surface sites similar to those found in the National Park. Ute tour guides take visitors into their tribal park to explore archaeological sites and rock art (prehistoric

Puebloan and historic Ute) on half and full day tours call ahead for reservations. 11 miles south of Cortez, CO on Hwy 160.

www.utemountaintribalpark.info

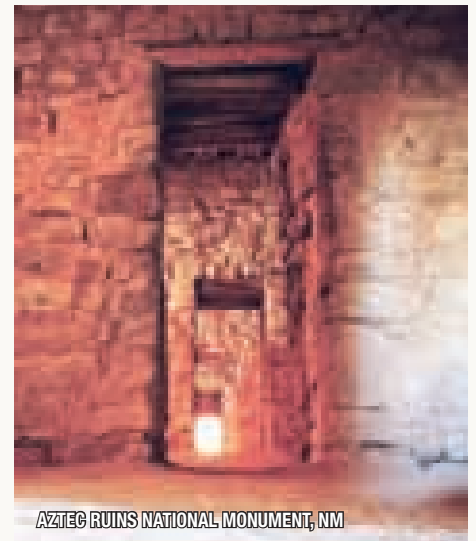
San Juan National Forest. Blanketing spectacular, 10,000-14,000 foot mountains just north of Cortez and Durango, CO, the San Juan offers outstanding hiking, mountain biking, riding, jeeping, climbing, kayaking, fishing, and camping. Many old mining towns dot the area. 970-247-4874.

www.fs.fed.us/r2/sanjuan



SAN JUAN SKYWAY

Travel the "road to the sky" which offers views of the towering 14,000-foot San Juan Mountains to rolling hillsides speckled with ancient Indian pueblo ruins. Victorian towns offer both excitement and relaxation. Soak in hot springs, ride the narrow-gauge railroad, and sleep under the stars or in a cozy lodge. This byway can be traveled in a loop. Total distance: 236 miles / 379.8 km.



AZTEC RUINS NATIONAL MONUMENT, NM



CHACO CULTURE NATIONAL HISTORIC PARK, NM

Nearby Communities: Sizeable towns nearest Mesa Verde are Cortez and Durango, Colorado. Cortez (8 miles west of Mesa Verde) makes a wonderful base for exploring more of the area's archaeology and offers free Indian dances nightly. **Durango** (36 miles east) offers the historic silver boom-town feel with the famous Durango & Silverton Railroad, and Victorian architecture. Both have numerous hotels, restaurants, and other entertainment. Websites: www.mesaverdecountry.com www.durango.org

Chaco Culture National Historic Park. Unlike most of today's well-known, well-preserved Ancestral Puebloan sites, Chaco is not comprised of cliff dwellings. Instead, a broad, shallow canyon cradles the spectacular public architecture of this ancient urban center, the hub of the Puebloan world for religion, trade, and administration. Hiking only; mountain biking on the one loop road around the canyon floor. 76 miles south of Farmington, off of Hwy 550. 505-786-7014. www.nps.gov/chcu

Aztec Ruins National Monument. Nestled on the edge of the free-flowing Animas River in Aztec, N.M., this 450-room UNESCO World Heritage site was occupied by ancestral Pueblo people from 1100-1300 A.D. The largest ceremonial chamber within the Pueblo is the only reconstructed Great Kiva in North America. Self-guided interpretive trail, visitor center, museum, picnic area. Located in northwest New Mexico off U.S. Hwy. 550 just 10 minutes south of the Colorado/New Mexico state line. 505-334-6174. www.nps.gov/azru

Bisti Badlands & De-Na-Zin Wilderness Area. This wonderland of soft clay and sandstone formations can be reached from state road 371 on US 64.

Salmon Ruins & Heritage Park. Another large greathouse, or small village, believed to have been a community connected to the people of Chaco Canyon. 8 miles east of Farmington, NM on Hwy 64. 505-632-2013. www.farmingtonnm.org

Angel Peak National Recreation Area. This seldom-visited area southeast of Farmington is named for 6,988-foot high Angel Peak. It is situated in the middle of a large expanse of badlands and arroyos, an area of very little vegetation but much scenic beauty. The rock formations in the Recreation Area are a palette of pastel earth-colored hues stretching across the horizon.

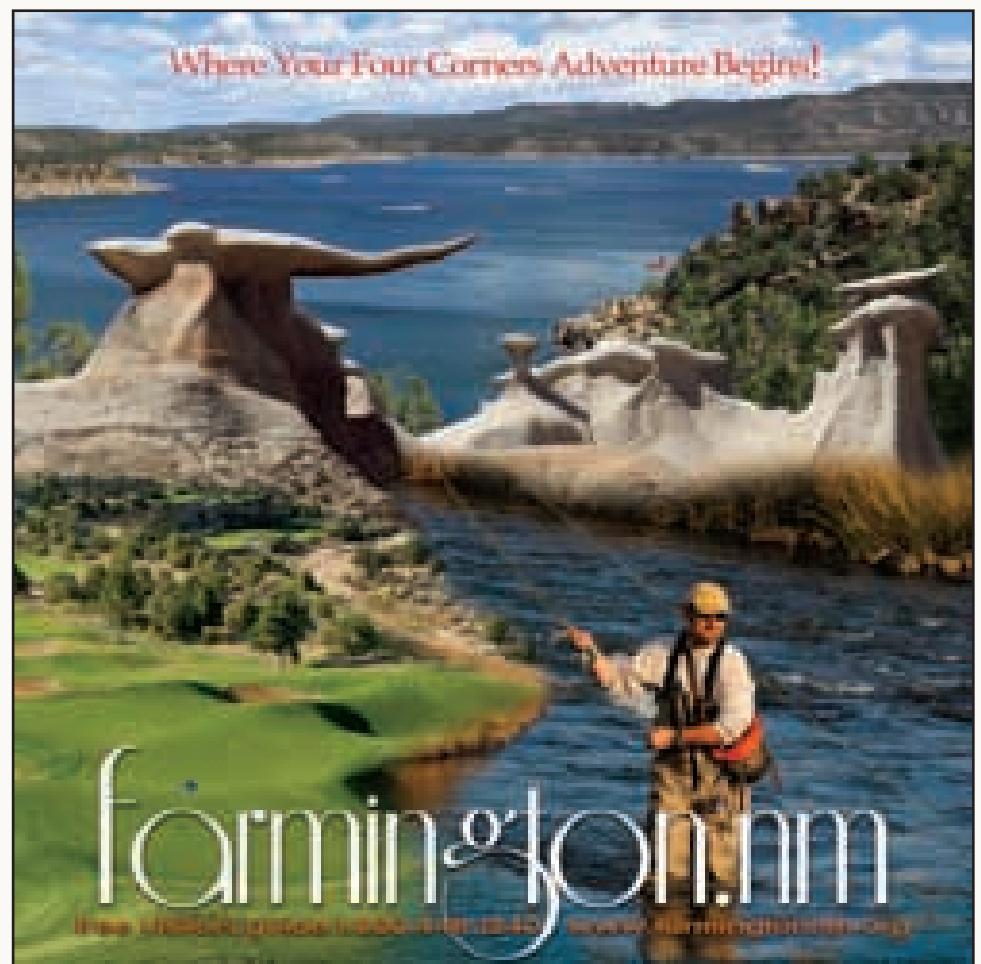
Shiprock Peak. The name Shiprock was first applied to this solidified lava core in the 1870s on U.S. Geological Survey maps for its resemblance to a nineteenth century clipper ship. Its Navajo name is Ts Bit A', rock with wings. It is very important in Navajo mythology and religion.

Nearby Communities: Sizeable towns near these popular wilderness areas and Ancestral Puebloan destinations in northwest New Mexico include Aztec, Bloomfield, Farmington and Shiprock.

Websites: www.aztecnm.com; www.bloomfieldnm.com; www.farmingtonnm.org

The Farmington / Gallup / Four Corners Area are the hubs of Navajo Country in New Mexico that include Red Rock State Park, museums, lodging, restaurants and outdoor recreation. www.Navajonationparks.org www.discovernavajo.com

Petroglyph National Monument. Although traces of Native American culture can be found throughout the Monument, it is of course best known for the over 20,000 petroglyphs (images pecked or carved into rock) that can be viewed there. Five volcanic cinder cones on the West Mesa of Albuquerque produced the basalt boulders that were the rough canvas for these amazing petroglyphs. The Visitors Center, once a homestead-era traditional adobe home, is the best place to start your visit.



Puye Cliff Dwellings National Historic Landmark. Puye Cliff Dwellings is the ancestral home of the inhabitants of Santa Clara Pueblo. The site consists of two levels of cliff dwellings and a large settlement, known as the Community or Great House, on top of the mesa. Approximately 1,500 people lived here from the late 1100s to 1580. A 1930s Harvey House now serves as an interpretive center for the site.

Bandelier National Monument. Bandelier's human history extends back for over 10,000 years when nomadic hunter-gatherers followed migrating wildlife across the mesas and canyons. Around 1150, Ancestral Pueblo people began to build permanent settlements here, but by 1550 the Ancestral Pueblo people had moved from their homes to pueblos along the Rio Grande (Cochiti, San Felipe, San Ildefonso, Santa Clara, Santo Domingo). Reminders of these past times are still evident in the monument.



JEMEZ MOUNTAIN TRAIL

Jemez Mountain Trail takes you through time, past amazing geological formations, ancient Indian ruins, and an Indian pueblo. The area is rich in logging, mining and ranching heritage. Sites include Jemez State Monument, Bandelier National Monument, Soda Dam, Cabezón, Battleship Rock, and the Spence and Jemez Mountain Hot Springs. 163 mi. / 262 km Loop Road near Albuquerque, NM.

Canyon de Chelly National Monument. This Monument shelters over 1,600 years of Native American history. Early Ancestral Puebloan basketmaker home sites built high into cliff alcoves grace spectacular red rock canyons where Navajo farmers and sheepherders still live. One hiking trail; jeep and horseback guided tours. Near Chinle, AZ, off Hwy 191. 928-674-5500.
www.nps.gov/cach

Hubbell Trading Post National Historic Site. The trader John Lorenzo Hubbell introduced rug patterns popular on the East Coast (imported from China and Persia) and locals began weaving them to create the distinctive regional style of Ganado. Today,



CANYON DE CHELLEY NATIONAL MONUMENT, AZ

the trading post looks as it did a century ago, stocked with excellent rugs for sale. Weaving demonstrations also done. 36 miles south of Chinle, AZ (Canyon de Chelly) on Hwys 191 & 264. 928-755-3475.
www.nps.gov/hutr

Window Rock Navajo Tribal Park. This graceful sandstone arch, a sacred Navajo site, sits above the Navajo Nation Council Chambers and Navajo Tribal Museum. The Chambers, modeled after a large hogan with murals that depict Navajo history, are open for tours.
www.discovernavajo.com

Nearby Communities: The small town of **Chinle**, and the capital of the Navajo Nation, **Window Rock**, both in Arizona, have a few motels and restaurants for visitors. **Gallup**,

NM, located on I-40 about 100 miles south of Canyon de Chelly, is a busy trading center for all southwestern arts, particularly jewelry. It's estimated that 80% of Navajo and Pueblo jewelry passes through wholesalers there.
www.discovernavajo.com



HISTORIC ROUTE 66 SCENIC BYWAY

In its glory days Historic Route 66 was a symbol of freedom and opportunity to travelers across the nation as it stretched across Northern New Mexico and Arizona. History lovers have preserved many of the attractions so unique to the "Mother Road" in places like Albuquerque and Gallup. Relive the glory days of one of America's most historic byways by visiting the restored quirky restaurants, gas stations, motels and other sites all along the Historic Route 66.

The Spanish in New Mexico

Nowhere in the Grand Circle is the influence of the colonial Spanish more evident than in Northern New Mexico. It is found in the architecture, central plazas, churches, art and artifacts that remain today.

The first significant contact between Spanish explorers and the Native American inhabitants of the region came in 1542 when an expeditionary force, led by Francisco Coronado, traveled from Mexico seeking the rumored Seven Golden Cities of Cibola. Reaching what is now New Mexico, they encountered Native American pueblos and quickly overcame them.

The Spanish remained and embarked on a mission of conquest and conversion in their newly claimed lands. Over succeeding decades, more settlers, clerics and officials arrived from Mexico. In 1610, the settlement of Santa Fe was established and government buildings, churches and residences began to multiply.

In 1680, the Pueblo of Ohkay Owingeh led a revolt to drive the Spanish from New Mexico, overtaking Santa Fe. The Spanish fled, but returned peacefully in 1692 to re-establish their colony. The revolt is credited with saving the Pueblo culture in New Mexico.

Santa Fe celebrated its 400th Anniversary in 2010. It is the second oldest city and the oldest capital in the U.S. Drawing on its Spanish and Native American heritage, it is today a world-renowned center for the arts.

As it was in the 1600s, the Santa Fe Plaza is still the community gathering spot and location for major events. Surrounding the Plaza and on its side streets, buildings retain the distinctive earth-colored adobe construction that evolved from the Pueblo dwellings

encountered by the first Spanish settlers. Located on the north side of the Historic Santa Fe Plaza is the Palace of the Governors, the oldest continually occupied public building in America. Along with the New Mexico History Museum, the Palace of the Governors serves as an archive of New Mexico's rich and diverse history. On its east side, St. Francis Cathedral, dedicated in 1886, is a blend of adobe, French-Romanesque and modern architectural styles. Other historic sites, museums and cultural centers are found throughout Santa Fe.

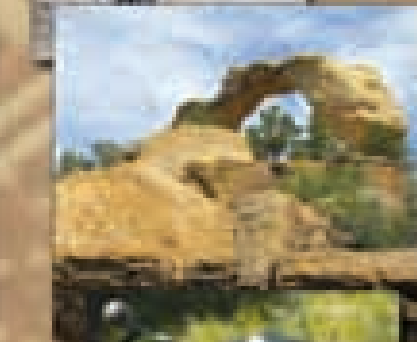
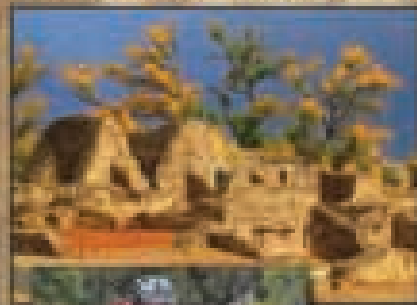
Albuquerque and the surrounding valley began to be settled by the Spanish in the mid-1600s and was formally established in 1706.

The historic heart of Albuquerque, Old Town Plaza, was also created in 1706. The picturesque plaza today looks much like it did when it was built centuries ago and events still revolve around it as they did three hundred years ago. El Camino Real, the Royal Road, once ran through Old Town connecting Mexico City with New Mexico's Spanish capitals. From 1598 until the opening of the Santa Fe Trail in 1821, El Camino Real was the main route into New Mexico for settlers, livestock and goods. El Camino Real has been designated National Scenic Byway and National Historic Trail.

Around the plaza, Albuquerque's Old Town comprises about ten blocks of historic Pueblo-Spanish buildings. On the north side of the plaza is the San Felipe de Neri Church, the oldest building in the city (1773). In the surrounding area the colonial city's homes, shops and government buildings have been converted into restaurants, art galleries and shops. Just to the east of Old Town are numerous museums and discovery centers.

AZTEC NEW MEXICO

**YOUR
FOUR CORNERS
PLAYGROUND
(since 1100 A.D.)**



**(888) 543-4629
aztecnm.com**

Travel Planning

TIPS FOR PLANNING YOUR TRIP

ZION NATIONAL PARK, UT

The Grand Circle - All Year Long

In the Grand Circle, there is no reason to pick one season or one vacation over another - you can do it all. Combine skiing outside Denver or Salt Lake City with hiking in Moab or golfing in Sedona. If the South Rim is chilly in winter, hike into the Grand Canyon for a springtime paradise. If canyons seem too warm in summer, drive up into the mountains for cool green escapes.

When it snows, we celebrate. Our mountains become comforted in deep powder, while our canyons are sometimes blessed with dustings of glitter, most often gone by midday. A true gift for the lucky who catch the beauty.



GATEWAYS TO THE GRAND CIRCLE

Reaching the Grand Circle is easy through any of several gateway cities. Each has its own character and is home to a wide variety of attractions.

A beautiful, clean, and safe city, **Salt Lake City** combines unparalleled nearby natural recreation, a bustling economy, exciting restaurants, remarkable history, and easy access to the Grand Circle. Known worldwide for its Mormon pioneer history - including Temple Square and the Mormon Tabernacle Choir - the city also has four world class ski mountains within an hour's drive. Warm western hospitality and Utah's "Greatest Snow on Earth" are just two of the reasons the International Olympic Committee selected Salt Lake to host the Olympic Winter Games in 2002.

It doesn't snow often in the lower elevations, so you can plan a relatively chill-free vacation - tour Chaco Canyon, watch balloons rise over Valley of the Gods, jeep through Canyon de Chelly and explore the vivid pastel slot canyons near Page. Mountain biking near Moab is even better in winter than summer. Days just crisp enough to chill perfect mountain powder slide into days toasty enough to warm quiet canyon alcoves.

A city of the unexpected, **Denver** is filled with history, art, culture, entertainment and energy - all in a beautiful location at the foot of the Rocky Mountains. Denver is booming - with a thirty percent population growth since 1990, the city now bursts with parks, museums, and family entertainment. Whether you're looking for Old West history or fun-filled nightlife, Denver has something for you! 800-233-6837.

www.denver.org

Albuquerque vibrates with cultural diversity and history - the city was founded in 1706. Latino, Anglo, and Native American Pueblo cultures thrive on this western fringe of the Sandia Mountains, just an hour from Santa Fe. Historic Old Town and the Indian Pueblo Cultural Center, galleries and a large university bring a centuries' old feel to this friendly city. 800-284-2282.

www.itsatrip.org

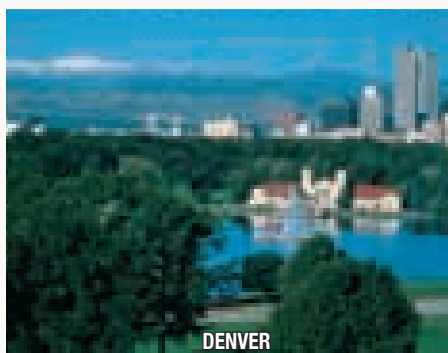
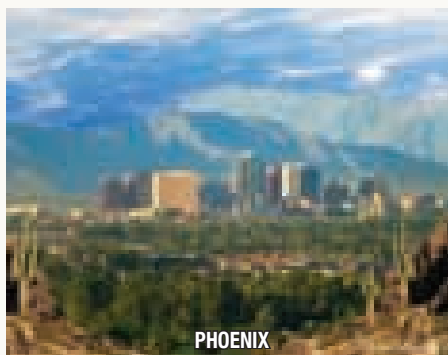
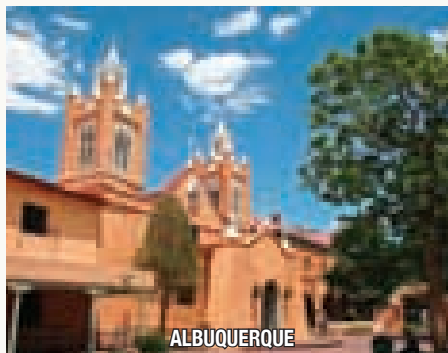
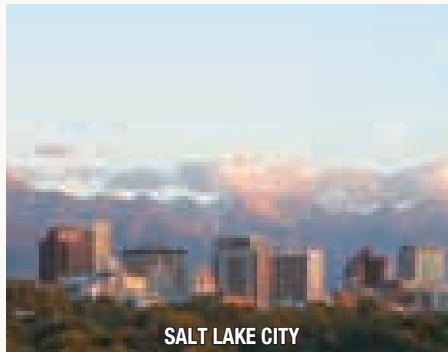
Shows, nightclubs, casinos, great year round weather and close access to the Grand Circle (just three hours to Zion National Park) make **Las Vegas** a destination for millions of visitors, including families.

Phoenix has been named one of the world's top five golf destinations, full of lovely resorts and countless activities ranging from museums, galleries, performing arts, fine dining, horseback riding and cowboy shoot-outs. The climate makes outdoor activities a way of life. 602-254-6500 or 877-CALLPHX.

www.phoenix.com

Driving Tips

It's going to take longer than you think. Twisting mountain roads, single



lane roads, and all the wondrous things to do every day are going to slow you down.

- **Gas up.** You can travel a hundred miles between fuel stops. Make sure all of your vehicles other fluids are full, too.
- **Watch for animals.** Free-range livestock grazing is commonplace out here - and if the cows and sheep don't wander into the road, the deer might.
- **Road Advisories.** If a road advisory blinks a warning like "Steep Curves Ahead," or "Chains or Snow Tires Required," or advises you not to continue without four wheel drive, believe it. Carry water and - in winter - extra clothes and a small shovel.

Cultural Etiquette

Indian reservations are sovereign nations. Traffic violations and accidents (for instance, hitting any free-range livestock) may bring you up before tribal, not state, jurisdiction. Alcohol is not permitted on most reservations; carrying it - whether in open or closed containers - is illegal. Consider, at all times, that you are a guest of a different culture, a different nation. Do not photograph people unless permission is requested and granted. Never interrupt ceremonies or rituals. Do not assume all people speak English (and, for that matter, don't assume they speak none). If you are buying crafts from a roadside vendor, ask if the price is negotiable; sometimes it is, often it isn't. Be polite, just like you would in your neighbors' home.



areas for 365 days.

www.nps.gov

Visitor Centers

Your first stop in any park or community should be the visitor center. You can strategically plan your day, find out what interests you most and learn about any special programs you might wish to join. Due to budget constraints, many parks and forests charge modest fees for participation in some programs and hikes.

Time Zones

“What time is it?” can be a complex question out here.

November – March, everyone in the Grand Circle is on Mountain Standard Time. April – October, though, is a different story.

- Colorado, Utah, New Mexico, and the Navajo Nation all change to Daylight Savings Time (DST).
- Arizona does NOT change to DST except those areas that are Navajo Nation land.
- The National Parks in Arizona within the Navajo Nation (Canyon de Chelly, Hubbell Trading Post, and Navajo National Monument) do change to DST.

Be Weather Wise

When rain or thunder storms are possible, be cautious when camping or hiking in narrow canyons and washes. While it may not be raining where you are, dry waterways can fill quickly and violently with floodwater. Low spots in the road can be a hazard when rains come. Wait until the water has subsided before crossing them in a vehicle.

Save With Park Passes

There are over thirty national parks and monuments, national recreation areas, and national historic parks within the Grand Circle, as well as national forests, state parks and tribal parks. Most sites charge an entrance fee, but National Park Service (NPS) and state multi-park passes are available. If you plan to visit several National Parks or Monuments on your travels, the America the Beautiful Pass can yield great savings. One pass can be purchased for \$80 allowing entrance for up to four adults, and is good at all national parks, monuments, and recreation

Distances Between Grand Circle Attractions

MILEAGE CHART	Arches	Bryce Canyon	Canyonlands (Island in the Sky)	Canyonlands (Needles District)	Capitol Reef	Grand Canyon-North Rim	Grand Canyon-South Rim	Lake Powell-Bullfrog	Lake Powell-Page	Mesa Verde	Monument Valley	Petrified Forest Ntl. Park	Zion
Arches		270	31	62	142	396	333	163	287	149	171	335	284
Bryce Canyon	270		310	347	121	160	300	214	150	376	277	388	83
Canyonlands (Island in the Sky)	31	310		105	275	435	359	203	316	180	190	315	435
Canyonlands (Needles District)	62	347	105		230	380	314	148	271	135	145	375	390
Capitol Reef	142	121	275	230		275	415	91	327	259	185	420	204
Grand Canyon-North Rim	396	160	435	380	275		325	372	130	232	191	200	119
Grand Canyon-South Rim	333	300	359	314	415	325		310	141	270	197	325	259
Lake Powell-Bullfrog	163	214	203	148	91	372	310		240	220	122	220	301
Lake Powell-Page	287	150	316	271	327	130	141	240		221	127	220	117
Mesa Verde	149	376	180	135	259	232	270	220	221		141	232	354
Monument Valley	171	277	190	145	185	191	197	122	127	141		191	228
Petrified Forest Ntl. Park	335	388	315	375	420	200	325	220	220	232	191		357
Zion	284	83	435	390	204	119	259	301	117	354	228	357	

Mileage from Major Cities to the Center of the Grand Circle (Lake Powell)

Albuquerque	431	Las Vegas	351
Denver	515	Los Angeles	513
Farmington	289	Phoenix	282
Flagstaff	136	Salt Lake City	378
Grand Junction	248	San Francisco	698

Grand Circle Directory

Arizona, Colorado, Nevada, New Mexico, Utah



MONUMENT VALLEY NAVAJO TRIBAL PARK, AZ/UT

REGION WIDE

ADVENTURE MEDIA, LLC

Publisher of the Grand Circle Travel Planner and other award winning travel guides. Specializing in multi-language publications and international markets.

520-544-3936. Email: adventuremedia@cox.net

AMERICA 4 YOU L.L.C.

Receptive tour operator specializing in "soft" adventure travel like ranch vacations, cattle & horse drives, river rafting, Native American culture, snowmobiling excursions and self-drive itineraries. P.O. Box 2214, Fullerton, CA 92837. 714-447-3826, fax 714-447-3627.

www.america4you.net

ARAMARK PARKS AND DESTINATIONS

ARAMARK

Parks and Destinations delivers authentic and memorable experiences at national and state parks, national forests, specialty hotels and other tourist destinations throughout the United States. In the Southwest, ARAMARK Parks and Destinations operates lodging, campgrounds, restaurants and activities ranging from guided tours in Mesa Verde National Park to houseboat rentals at Lake Powell. In addition, it offers white water rafting down the Colorado River through the Grand Canyon and Cataract Canyon in Canyonlands National Park. www.aramarkparksanddestinations.com or @aramarkparks on Twitter.

DETOURS/DETOURS PLATINUM

Detours offers scheduled day tours and multiday tours from Phoenix and Scottsdale to Sedona, Grand Canyon, the Apache Trail and other Arizona highlights. Unique tours to National Parks and Indian lands are operated out of Phoenix, Las Vegas, and Albuquerque. Group size is generally 8-12. Our Platinum program offers private tours in luxury SUVs for 2-6 people. We can custom design anything! 394 East Redfield Road, Chandler, AZ. 480-633-9013. Fax 480-633-8687.

www.detoursaz.com or www.detoursplatinum.com.

FOREVER RESORTS

Introducing Forever Resorts' unique destinations and sharing America's National Treasures such as Grand Canyon's North Rim, Bryce Canyon, and other National Park destinations. From Black Canyon's scenic float trip launching from the base of Hoover Dam to houseboat rentals on Lake Powell, Lake Mead and many more lakes. 7501 E. McCormick Parkway, Scottsdale, AZ 85258. Lodging: 877-386-4383, Houseboat: 800-255-5561, Fax: 480-998-9965.

www.Travel-Forever.com/14gctp

NAVAJO NATION TOURISM OFFICE

The Navajo Nation extends into the states of Utah, Arizona and New Mexico, covering over 27,000 square miles of unparalleled beauty. Visit www.DiscoverNavajo.com to find information regarding attractions, culture and beliefs, lodging, weather, tour guides and more. Phone 928-810-8501.

SOUTHERN UTAH SCENIC TOURS

Receptive operator, provides monthly scheduled and custom tours for individuals and groups to Bryce, Zion, Monument Valley, Mesa Verde, Arches, Grand Canyon, etc. Most tours begin and end in Las Vegas. P.O. Box 1113, Cedar City, UT 84720. 888-404-8687.

www.utahscenic tours.com

SOUTHWEST ADVENTURE TOURS

Receptive operator, provides monthly scheduled and custom tours for large and small groups throughout the Southwest. 382 East 650 South Circle, Cedar City, UT 84720.

435-590-5864.

www.southwestadventuretours.com

ARIZONA

ARIZONA OFFICE OF TOURISM

Arizona - Experience the Grand Canyon, old west legends, Native American and Hispanic heritage, sun-drenched adventures, resorts to ranches, shopping & sports! For Arizona vacation information and travel deals, visit www.ArizonaGuide.com. 1110 W. Washington St., Ste. 155, Phoenix, AZ 85007. 866-488-3754

GREATER PHOENIX CVB

Experience the abundance of adventure opportunities and experiences associated with the region's Southwestern cultural heritage which await you in Greater Phoenix. Include a hot air balloon ride or a nighttime desert tour in your next visit. Amazing what you can do here! 602-254-6500, or 877-CALL-PHX, 400 East Van Buren, Suite 600, Phoenix, AZ 85004

www.visitphoenix.com

FLAGSTAFF / WILLIAMS / CAMP VERDE / PINETOP / VALLE

FLAGSTAFF CONVENTION & VISITORS BUREAU

The destination for all seasons, Flagstaff is alive with culture, beauty, and history - an ideal hub to experience the wonders of Northern Arizona. Located in the cool mountains near seven national parks and monuments and 80 miles from the Grand Canyon, Flagstaff offers a variety of dining, nightlife, outdoor recreation, and lodging, all in the heart of Route 66 country. With something to suit everyone's taste and style, visit Flagstaff for an adventure of your choice. For more information and to order a Visitor Guide, call 928.774.9541 or 800-842-7293 or visit www.flagstaffarizona.org Visitor Center at 1 E.

Route 66, Flagstaff, AZ 86001.

GRAND CANYON RAILWAY & HOTEL

Experience the Old West aboard a historic train arriving steps from the Grand Canyon. Relax at the traditional, 296-room G.C.R. Hotel. All-inclusive packages. Two blocks from Route 66. 233 N. Grand Canyon Blvd, Williams, AZ 86046. 800-THE-TRAIN, fax 928-773-1610.

www.thetrain.com

NATIVE AMERICANS FOR COMMUNITY ACTION

NACA is a nonprofit human service organization. One of the programs run by NACA is the Overlook Visitor Vendor Program. The site is on Coconino Forest Service land located on Highway 89A at the Oak Creek Vista Overlook. 928-526-2968.

www.nacainc.org



FARMINGTON, NM

WILLIAMS-GRAND CANYON CHAMBER OF COMMERCE

Gateway to the Grand Canyon®; Experience our Historic Walking Tour on Main Street, Cruise the Loop-Route 66, visit shops, museums, galleries, 18 hole golf, great airport facilities, and enjoy outdoor recreation and lakes in the beautiful Kaibab National Forest. Bearizona Drive Thru Wildlife Adventure opened in 2010. 200 W. Railroad Ave, Williams, AZ 86046. 928-635-1418, 800-863-0546, fax 928-635-1417.
info@williamschamber.com
www.williamschamber.com

GRAND CANYON / SOUTH RIM

BEST WESTERN GRAND CANYON SQUIRE INN

2 superb restaurants, outdoor heated pool, sports bar, bowling center, health spa and Family Fun Center. 100 Hwy 64, Grand Canyon, AZ 86023. 928-638-2681, fax 928-638-2782.
www.grandcanyonsquire.com

BIG E STEAKHOUSE

The Big E is the Grand Canyon dining spot to enjoy great food and great entertainment. No other Grand Canyon restaurant has this combination. The Big E is proud to feature Harris Ranch steaks...the highest quality beef available anywhere and the best steaks in Arizona! The Harris Ranch family has maintained a proud tradition of producing the finest all-natural premium beef in the West since the 1930's. As if that wasn't enough, The Big E also has live entertainment, a GIANT video wall, and music into the night. It's the place to be when the sun goes down! Highway 64, Grand Canyon, AZ 86023. 928-638-0333.
www.bigesteakhouse.com

CANYON PLAZA RESORT GRAND CANYON

Located one mile from Grand Canyon National Park South Rim Entrance. 176 newly remodeled deluxe rooms & 56 elegant 2-room suites, kids 16 & under stay free, full service restaurant (buffet or menu), indoor garden atrium with 18 ft. spa & Wintergarten lounge, outdoor pool (seasonal) and free high speed internet access. Call 1-800-995-2521 or 928-638-2673
www.grandcanyonplaza.com

GRAND CANYON CHAMBER OF COMMERCE

The Grand Canyon Chamber & Visitors Bureau is a non profit 501(c)6 organization located in the community of Tusayan. The Chamber provides the most comprehensive information for a visit to the Grand Canyon through our website. Our Information Specialists are highly trained in all aspects of information about Grand Canyon National Park. The Grand Canyon Chamber is also the "Official Arizona

Office of Tourism Visitor's Center" for the Grand Canyon/ Tusayan area. 3007 469 Highway 64, Grand Canyon, AZ 86023. Call 928-638-2901
www.grandcanyoncvb.org

GRAND CANYON NATIONAL PARK LODGES

The only lodges inside the park at the South Rim. Historic hotel and cabins, motel-style lodges on and just off the South Rim. Fine dining, family dining, cafeteria style. Gift shops, some in historic buildings. Grand Canyon, AZ 86023. 303-29-PARKS, 888-29-PARKS, fax 303-297-3175
www.grandcanyonlodges.com

GRAND CANYON RED FEATHER LODGE

Located one mile from Grand Canyon National Park. Walking distance of shops, restaurants and National Geographic Visitors Center / IMAX Theater. Clean, comfortable, newly updated rooms with friendly staff. Seasonal outdoor pool and spa, free WIFI, guest laundry facilities and complimentary coffee and tea all day. 108 St. Route 64, Grand Canyon, AZ 86023. 928-638-2414, fax 928-638-9216.
www.redfeatherlodge.com

NATIONAL GEOGRAPHIC VISITOR CENTER GRAND CANYON (IMAX THEATER)

The ultimate guide to the Grand Canyon, featuring the World's most watched IMAX movie, Grand Canyon: The Hidden Secrets. Free maps, tour information, exhibits, purchase park passes, National Geographic Store and Explorer's Café. One mile south of National Park South Rim entrance. 928-638-2468.
www.exploreythecanyon.com

GRAND CANYON / NORTH RIM

GRAND CANYON LODGE-NORTH RIM

Experience the Historic Lodge nestled on the north edge of the canyon at 8,100 ft. The only lodging in the Park. On-site Dining, Grand Canyon Cookout Experience, Gift Shop, Mule Rides, Hiking Trails and more. End of Hwy 67, North Rim, AZ 86052, Direct: 928-638-2611, Toll-free: 877-386-4383, Fax: 928-638-2554
www.Travel-Forever.com/14gctp

JACOB LAKE INN

Nestled in the towering pines of the Kaibab National Forest, Jacob Lake Inn is the gateway to the North Rim of Grand Canyon. We have 62 comfortable rooms, rustic cabins and lodge rooms. Enjoy our our great homemade food, outstanding gifts and Native American arts and crafts. We also have a gas station and a country store. Don't miss our world famous cookies and extra-thick creamy shakes. Please visit our website for reservations and more

information. HC 64 Box 15, Fredonia, AZ 86922. 928-643-7232
www.jacoblake.com

HOPÍ

HOPÍ ARTS TRAIL

The Hopi Arts Trail is a way for visitors to connect with the wonderful artists and galleries on the Hopi mesas in northern Arizona. The Hopi Arts Trail is an invitation to the world to visit the mesas in a respectful manner and to connect with some of the very best artists in their galleries and home workshops. Hopi art ranges from traditional to contemporary mediums and themes. Basket weaving, Kachina Doll carving, Pottery, and silversmithing are the four most prominent art forms but Hopi artists also find expression in painting, sculpture, glass making, and other contemporary art forms. PO Box 2260, Tuba City, AZ 86045, (928) 283-4500, Fax (928) 283-4499. www.hopiartstrail.com

KINGMAN

KINGMAN POWERHOUSE VISITORS CENTER

The Kingman Powerhouse was placed in service in 1907 to generate electrical power for the city of Kingman. It was then named the Desert Power and Water Company Electric Power Plant. It also supplied the area mines with power to operate their hoists and pumps. Completion of the Hoover Dam in 1938 pulled the plug on the local generating station. Rescued by a group of concerned citizens, the old powerhouse has been converted into a busy visitors center with more than 100,000 tourists a year. 120 West Andy Devine Avenue, Kingman, AZ 86401, 928-753-6106.

MONUMENT VALLEY

ANASAZI INN AT TSEGI CANYON

Close to Navajo National Monument and Monument Valley. Breathtaking view of Tsegi Canyon. See our webcam! Hwy 160, 11 mi west of Kayenta, AZ. 928-697-3793, fax 928-697-8249.
www.anasaziinn.com

GOULDING'S LODGE

You'll recognize scenes of Monument Valley from famous movies like Stagecoach and Wind Talkers. Beautiful rooms and a breathtaking view. Restaurant, Museum, Gift Shop, Campground, Store & Gas, Tours of Monument Valley and More. PO Box 360001, 1000 Main St, Monument Valley, UT 84536. 435-727-3231, fax 435-727-3344.
www.gouldings.com

SACRED MONUMENT TOURS

Private-guided Jeep tours of Monument Valley. Monument Valley, Mystery Valley and Tear Drop Arch in Horseshoe Canyon are among our exciting destinations. Options to suit any traveler – one hour tours, half or whole daytours and even overnight camping. Every Sacred Monument Navajo guided tour includes aspects of the Navajo culture presented by your guide. Traditional Navajo storytelling is also on fare; giving you a refreshing insight both to Monument Valley and the Navajo people that call this breathtaking landscape their home. Monument Valley, Utah 84536, 435-727-3218, Fax: 435-459-2501

THE VIEW HOTEL INSIDE MONUMENT VALLEY

The recently opened View Hotel is located inside beautiful Monument Valley. We also have a full service restaurant and gift shop located on premises. PO Box 360457, Monument Valley Tribal Park, UT 84536. 435-727-5555, fax 435-727-4545.
www.monumentvalleyview.com

PAGE/LAKE POWELL

ANTELOPE CANYON TOURS, INC.

Antelope Canyon awaits the adventurous traveler who seeks to discover one of the most spectacular sculptures set in stone, a must for amateur and professional photographers. 22 South Lake Powell Blvd., P.O. Box 936, Page, AZ 86040. 928-645-9102, tours@antelopecanyon.com www.antelopecanyon.com

ANTELOPE CANYON NAVAJO TOURS

Antelope Canyon Navajo Tours offers a truly authentic experience inside one of the most photographed natural wonders in the world. Run exclusively by the local Navajo people who have called the canyon their home for generations, the tour introduces the history, culture and music of the Navajo inside the sacred slot canyon as guests are taken on an intimate journey back in time to a land of peace and tranquility. Each year, thousands of visitors enjoy the beauty and wonder of Antelope Canyon and its towering narrow sandstone walls carved by centuries of rushing water. Indian Route 222, Lechee, AZ 86046. 928-698-3384. www.navajotours.com

ANTELOPE POINT MARINA

Lake Powell awaits—with brilliant blue waters, secluded beaches and over 92 major canyons including Rainbow Bridge National Monument. Luxury Houseboat & watercraft rentals, Boat tours, Floating Marina Village - Ja'di' tooh restaurant & lounge and Marketplace, Welcome Center, Dry Storage and more. Navajo Route 22B, Page, AZ 86040, Direct: 928-645-5900, Toll-free: 800-255-5561, Fax: 480-998-7399. www.TravelForever.com/14gctp

COLORADO RIVER DISCOVERY

We offer the most fantastic one-day rafting trips anywhere on the mighty Colorado River. We provide tours perfect for the entire family. Float 15 miles with experienced guides and learn about the area's geology, ecosystem, western explorations, and the river's role in the Southwest's water and power delivery system. 130 6th Avenue, PO Box 575, Page, AZ 86040. 1-888-522-6644. www.raftthecanyon.com

LAKE POWELL DAYS INN & SUITES

Ample boat parking at this brand new location. Suites available; adjacent to convenience store. Golf packages available. Let us be your home away from home. 961 N. Hwy 89, Page, AZ 86740. 928-645-2800, 877-525-3769, fax 928-645-2604. www.daysinn.net

LAKE POWELL NATIONAL GOLF COURSE

Beautiful Lake Powell National Golf Course provides an unparalleled golf experience, with views of Glen Canyon Dam, Lake Powell, and the Vermillion Cliffs. Lake Powell National is an 18-hole championship facility with multiple tee boxes ranging from over 7000 yards to 5000 yards accommodating all levels of play. Our picturesque setting will let you step away from everyday life as you get drawn into your golf experience. You will test your skills with our lush fairways, multiple hazards, and strategically placed sand traps. 400 Clubhouse Drive, Page, AZ 86740. 928-645-2023.

LAKE POWELL RESORTS & MARINAS

Arizona's only property located on the shores of Lake Powell. RV parks, Houseboat & Powerboat Rentals, Scenic Boat Tours, Hiking Trails & Award Winning Dining. Lake Powell Resort, 100 Lakeshore Drive, Page, AZ 86040. 928-645-2433, 888-896-3829, fax 928-645-1031. www.lakepowell.com

PAGE-LAKE POWELL TOURISM BUREAU

Water sports, 18-hole golf course, snowmobile tours, flights. View of Wahweap Bay, Glen Canyon Dam. 647 A Elm Street, PO Box 727, Page, AZ 86040. 928-660-3405, 888-261-PAGE. www.pagelakepowelltourism.com

QUALITY INN PAGE/LAKE POWELL

Overlooking the majestic panorama of Glen Canyon Dam, Lake Powell, and Lake Powell National Golf Course. Within walking distance to tourist and entertainment spots in Page. Located at 287 North Lake Powell Blvd., Page, AZ 86040. 928-645-8851, 866-645-8851, fax 928-645-2523. www.ExploreNavajo.com

WILDERNESS RIVER ADVENTURES

Whitewater river rafting within the walls of the Grand Canyon. Wilderness River Adventures expert crews guide you safely on rafting itineraries that range from 2 days to 16 days on the Colorado River in the Grand Canyon or in Cataract Canyon. Perfect by yourself or with a group, you'll find this is the vacation experience of a lifetime. Let yourself go! The Colorado rivers never-ending current carries you to new discoveries of majesty and beauty, and to new heights of excitement and adventure. Your journey climaxes at a wonderful destination: a new you. P.O. Box 717, Page AZ 86040. 800.992.8022, 928.645.6049 Fax 928-645-6113. www.riveradventures.com

PHOENIX AREA

GREATER PHOENIX CONVENTION & VISITORS BUREAU

Southwest character and urban sophistication meld perfectly in Greater Phoenix, where real cowboys, rugged mountains and the kind of cactus most people only see in cartoons share a sun-burnished landscape with luxury resorts and spas, championship golf courses, to-die-for shopping, pro sports venues, and some of the best museums in the American West. BLOG: thehotsheetblog.com // FACEBOOK: Visit Phoenix // TWITTER: visitphoenix. 602-254-6500, or 877-CALL-PHX, 400 East Van Buren, Suite 600, Phoenix, AZ 85004 www.visitphoenix.com

SEDONA

RED ROCK WESTERN JEEP TOURS

Originating in Sedona, Arizona in 1983, Red Rock Western Jeep Tours with its "Old West Hospitality & Style" has grown from one jeep and a few U.S. Forest Service permits to a fleet of over 26 vehicles and an operation which includes a variety of scenic and rugged jeep tours, sacred earth/vortex tours, rare archaeological tours, hiking, biking tours, jeep-helicopter combinations, horseback rides and ranch cookouts, as well as large-scale team-building and group events. Preferred Vendor of Adventures by Disney and Grand Canyon Railway. 928-282-1851, fax 928-282-0254. www.redrockjeep.com

SEDONA CHAMBER OF COMMERCE

Often called "Red Rock Country", Sedona is a four-seasons playground for everyone - whether you're into history and archaeology; arts and culture; shopping; outdoor sports; or the spiritual and metaphysical, imagine doing all of this in a backdrop of some of the most spectacular scenery in the world. This picturesque city is surrounded by red-rock monoliths named Coffeepot, Cathedral, and Thunder Mountain. At the north end of the city is the stunning Oak Creek Canyon, a breathtaking chasm that is wildly wonderful. Natural endowments aside, you'll also find world-class hotels, resorts, beds and breakfasts, and a very good variety of dining to keep you satisfied. Escape the chaos of life, kick back and relax in Sedona. You will want to visit Uptown Sedona Visitor Center for maps, directions, suggestions or to purchase your Red Rock Pass. The Sedona Chamber of Commerce supports over 350,000 visitors a year. Visit us at 331 Forest Road, Sedona, AZ 86336. 800-288-7336. www.visitsedona.com

TUBA CITY / MOENKOPI

EXPLORE NAVAJO MUSEUM

Explore a Culture like no other! Come and explore the historic contributions and great accomplishments of the Navajo people. 10 N. Main St., Tuba City, AZ, (800) 644-8383, (928) 640-0684, www.explorenavajo.com

MOENKOPI LEGACY INN & SUITES

Newest hotel on tribal lands (first on Hopi land in 50 years). Outdoor Heated Pool and Jacuzzi, Fitness Center, Tsots'valki Conference Center, San Francisco Peak Serenity Room & Kiva Garden. 16 suites, wireless internet, striking architecture & décor. Learn about Hopi Culture by attending an Experiencing Hopi Presentation. Located adjoining Tuba City at the western Gateway to the Hopi Mesas. Tour the mesas and villages with Authorized Hopi Guides. PO Box 2260, Tuba City, AZ 86045. 928.283.4500, fax 928.283.4499. www.experiencehopi.com

QUALITY INN — TUBA CITY

Explore Navajo! Beautiful Southwestern rooms, Hogan Restaurant, Historical Trading Post, Explore Navajo Interactive Museum. Begin your excursion today at explorenavajo.com. Hotel designed with Native themes. PO Box 247, Tuba City, AZ 86045. 928-283-4545, 800-644-8383, fax 928-283-4144. www.ExploreNavajo.com

TUCSON

WHITE STALLION GUEST RANCH

This charming, informal guest ranch gives you the feeling of the Old West. Only at White Stallion Ranch can you find 3,000 acres of wide-open land at the foot of the ruggedly beautiful Tucson Mountains, adjacent to the Saguaro National Park. Horseback riding and so much more. Here, ranch hospitality is blended perfectly with the comforts and facilities of a top resort. 9251 W. Twin Peaks Road, Tucson, AZ 85743, 888-WSRANCH (888-977-2624). Fax: 520-744-2786. www.whitestallion.com

WINDOW ROCK

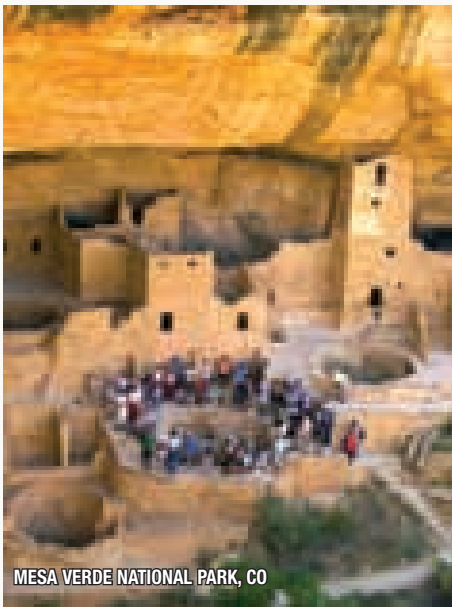
NAVAJO NATION TOURISM

273The Navajo Nation extends into the states of Utah, Arizona and New Mexico, covering over 27,000 square miles of unparalleled beauty. The Navajo Reservation is home to more than a dozen national monuments, tribal parks and historical sites, and is peppered with a dozen lakes and ponds - Lake Powell alone has 186 miles of Navajoland shoreline. Here, you can step back in time and see how the ancient ones - the Anasazi people - lived thousands of years ago. The Navajo Nation has an array of ancient ruins, including the world renowned Navajo National Monument and the tranquil Chaco Culture National Historical Park. From the towering formations of Monument Valley to the majestic red sandstone walls and lush green valley floor of Canyon de Chelly, this is a land of great contrasts. We invite you to Discover Navajo. P.O.Box 663, Window Rock, AZ 86515. 928-810-8501, 928-871-6436.

COLORADO

COLORADO TOURISM OFFICE

Welcome to Colorado, home to four (4) National Parks, five (5) National Monuments, one (1) World Heritage site, seven (7) Historic Railroads, twenty-six (26) Ski Resorts and fifty-four (54) Peaks over 14,000 ft. high. In Colorado guests can experience the wonder of alpine meadows coated in wildflowers and glacier-formed lakes; concerts in a red rock amphitheater or horse back rides on see-forever ranch lands;



MESA VERDE NATIONAL PARK, CO

river rafting down miles of white water rapids or skiing at any of our world famous ski resorts. 1625 Broadway, Suite 1700, Denver, CO 80202. 1-800-COLORADO. www.colorado.com

VISIT DENVER

As the gateway to the Rocky Mountains, Denver offers world class shopping, cultural events, nightlife, museums and many professional sports teams. Contact us to find out more about everything that's new in Denver! 1555 California St., Suite 300, Denver, CO 80202. 303-892-1112, 800-2-Denver, fax 303-892-1636. www.VISITDENVER.com

DELTA COUNTY

DELTA COUNTY TOURISM CABINET CEDAREEDGE, CRAWFORD, DELTA, HOTCHKISS, AND PAONIA.
A visit to "Our side of the Divide," will have you traversing through the ancestral lands of the Ute Indians. Enjoy desert canyon rock art, trails and rivers. Climb up to our alpine forests for sapphire lakes, alpine trails and spectacular views. www.deltacountycolorado.com

DURANGO / SILVERTON / TELLURIDE / RIDGWAY / OURAY

DURANGO AREA TOURISM OFFICE
Real town. Real mountains. Real vacation...Nestled in the San Juan Mountains of Southwest Colorado, Durango is the kind of town you dream about. Take a breathtaking ride aboard the Durango & Silverton Narrow Gauge Railroad, float the Animas River, dine in our award-winning restaurants, ski Purgatory, experience Mesa Verde National Park, and shop distinctive boutiques and galleries in our historic district. You'll find friendly locals, spectacular mountain views, a healthy pace of life, and 300+ days of sunshine per year. There are endless ways to rejuvenate, relax and reinvigorate in Durango, and the scenery is nothing short of awe-inspiring. 111 S. Camino del Rio, Durango, CO 81301. 800-525-8855. www.durango.org

DURANGO & SILVERTON NARROW GAUGE RAILROAD
Step back in time with a ride behind a coal-fired, steam-powered vintage locomotive for a magnificent ride through the mountains of southwest Colorado. 479 Main Ave, Durango, CO 81301. 970-247-2733, 888-872-4607, fax 970-259-3570. www.durangotrain.com

DURANGO HAMPTON INN

Situated near the historic downtown area, within easy reach of the Mesa Verde National Park and the beauty of Vallecito Lake and Purgatory Ski area. Free breakfast, free high-speed internet, Free coffee and tea in the lobby, Earn HHonors points. 3777 Main Ave., Durango, Colorado, 81301, 970-247-2600.

THE ROCHESTER HOTEL

The historic Rochester Hotel, built in 1892, offers 15 luxurious rooms with high ceilings and private bathrooms. The hotel is situated on a beautifully landscaped site, featuring a flower-filled courtyard. Rooms are decorated in Old West motif inspired by the Western movies filmed in the Durango area. Movie posters framed in marquee lights line the hallways. It is located in the heart of downtown Durango, one block off historic Main Avenue. 721 East Second Avenue, Durango, CO 81301. 970-385-1940. www.rochesterhotel.com

THE STRATER HOTEL

A stay at the historic Strater Hotel will give you a sense of place in Durango and help to create memories that will last a lifetime. From the moment you step into our lobby it's like entering another world, as if you've gone back in time. The Strater Hotel will take you to a romantic time in our frontier history when Victorian palaces like the Strater were a splash of opulence in the wild west. Our hotel lobby is like a museum with display cases full of wonderful relics of the times from the Cliff Dwellers at Mesa Verde to the 1890's and early 1900's. Our famous Diamond Belle Saloon, Office Spiritorium, and Mahogany Grille are favorite eateries of our locals. During the summer you can enjoy one of America's few remaining authentic Melodramas & Vaudevilles at the Henry Strater Theatre. We have a unique variety of shows throughout the year. 691 Main Avenue, Durango, CO 81301. 970-247-4431. www.straterhotel.com

GRAND JUNCTION

DOUBLETREE BY HILTON / GRAND JUNCTION
273-room full service hotel situated on 10 landscaped acres with seasonal outdoor saline pool, whirlpool, sand volleyball court and children's playground. Hotel is surrounded by the Little Bookcliff Mountains, the Grand Mesa and the Colorado National Monument. Location is near the Grand Valley's 21 wineries, biking trails, and skiing at the Powderhorn. 71 Horizon Dr., Grand Junction, CO 81506. 970-257-8129. www.doubletreegrandjunction.com

GRAND VISTA HOTEL

Surrounded by western Colorado's beauty – L70 location, full service hotel with 158 rooms and mini-suites, Oliver's Restaurant & Bailey's Lounge. Indoor swimming pool and hot tub open until midnight. offers 24-hour gift shop and exercise room. 2790 Crossroads Blvd, Grand Junction, CO 81506. 800-800-7796, toll free. Fax: 970-241-1077. www.grandvistahotel.com

THE GRAND JUNCTION VISITOR & CONVENTION BUREAU
Gateway to the 23,000 acre Colorado National Monument, Grand Mesa National Forest with over 300 lakes, dinosaur expeditions, over 20 wineries, whitewater rafting, mountain biking, and hiking. 740 Horizon Dr., Grand Junction, CO 81506. 970-244-1480, 800-962-2547, fax 970-243-7393 www.visitgrandjunction.com

IGNACIO

SKY UTE CASINO RESORT & CONVENTION CENTER
Offering 140-luxury rooms, 8-suites, and (4) restaurants near Ignacio/Durango townships, over 1000 parking spaces featuring (24) RV's full hookups and spacious tour bus parking, 24-hour security and front desk service, private access to indoor pool, hot-tub and exercise room. Amenities include gift shop, Native American Spa and

massage therapists. Family and senior friendly with (24) lane AMF bowling, putt-putt immersed in grand landscape vistas. Casino includes hundreds of slots, private poker room, Blackjack and more. Resort is next door to the Southern Ute Cultural Center and Museum, offering VIP tours, Step-on Tour guides and box lunch packages while visiting any National Parks and Colorado Monuments. Book over 20-rooms and get a free room for "Tour Conductor" and free meals for "Tour bus drivers." PO Box 340, Ignacio, Co. 81137. 970-563-1758 www.skyutecasino.com

MESA VERDE / CORTEZ / MANCOS / TOWAOC / DOLORES

MESA VERDE – FAR VIEW LODGE

Inside Mesa Verde National Park. Comfortable rooms with balconies, many with 100-mile views. Half-day guided tours are available. 425-site campground. Navajo Hill, Mesa Verde National Park, CO 81330. 800-231-5210, 800-449-2288. www.visitmesaverde.com/GCA10

MESA VERDE COUNTRY® VISITOR INFORMATION BUREAU

Home to Mesa Verde National Park, 2 National Monuments and a Tribal Park. Experience the Trail of the Ancients, the only National Scenic Byway dedicated solely to archaeology. Create lasting memories! P.O. Box HH, Cortez, CO 81321. 970-565-8227, 800-253-1616, fax 970-565-1155. www.mesaverdecountry.com

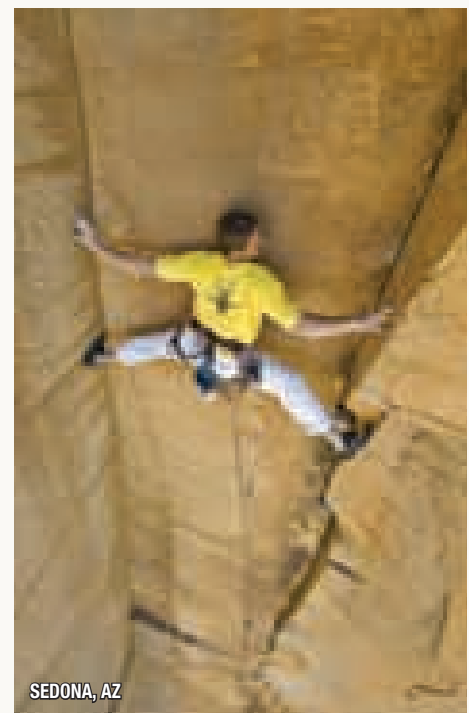
MESA VERDE NATIONAL PARK

In 1906 Mesa Verde National Park was set aside to "preserve the works of man." Over 52,000 acres preserve approximately 4800 known archeological sites. PO Box 8, Mesa Verde, CO 81330. 970-529-4465, fax 970-529-4637. www.nps.gov/meve

NEVADA

PONY EXPRESS TERRITORY

Survive the Loneliest Road in America as you retrace the Pony Express riders' footprints of yesteryear, ride the Ghost Train of Old Ely, venture into the Great Basin National



SEDONA, AZ

Park and experience much more in Pony Express Territory!
150 Sixth Street, Ely, NV 89301.
775-289-3720, 800-HW6-9350, fax 775-289-7675.
www.ponyexpressnevada.com

LAS VEGAS

PAPILLON GRAND CANYON HELICOPTERS

The Grand Canyon is one of the Seven Natural Wonders of the world and is visited by millions of people every year. Located in Arizona, not far from Las Vegas, our Grand Canyon tours offer a number of ways for you to explore the amazing landscape in all of its natural beauty. When you embark on one of the Grand Canyon tours with us, you'll be experiencing the Grand Canyon at its very best. The Las Vegas and Grand Canyon tours allow you to enjoy the landscape, the scenery, and the history. You can choose tours during the day or as the sun sets. We offer flights that take you into the Canyon, allowing you to explore the areas that are of the utmost interest to you. We are more than happy to send a shuttle for you at many of the pick-up points. We offer pick-ups from many Las Vegas hotels as well as the Grand Canyon National Park, Phoenix, and Sedona. 3900 Paradise Rd - Suite 233, Las Vegas, NV 89169. 702-736-6322.
www.papillon.com

NEW MEXICO

STATEWIDE

INDIAN COUNTRY, NEW MEXICO

It's a land that has been the stage for centuries of human history. You are about to embark on a remarkable journey of the mind, body and spirit. Follow a path through this magical high country. Your passage is guaranteed to be a memorable experience. Indian Country encompasses the lands of the Navajo, Apache, Ute, Zuni, and Acoma and stretches from Farmington to Gallup and Grants, New Mexico.

Zuni Tourism Office, Post Office Box 339, Zuni, NM 87327 505-782-7238

ACOMA

ACOMA/SKY CITY

The Cultural Center at the base of Sky City offers meals native to Acoma at the Yaak'a (Corn) Café. The Gaits'i (Beautiful) Gift Shop offers world famous Acoma pottery as well as jewelry. The Haak'u Museum showcases the history, art, and cultural that has endured for a thousand years. From I-40 at Exit 102. Acoma Sky City is located one hour west of Albuquerque and one hour east of Gallup, New Mexico. 800-747-0181. PO Box 310, Acoma, NM 87034. Fax 505-552-7883. www.skycity.com

ALBUQUERQUE

ALBUQUERQUE CONVENTION & VISITORS BUREAU

Albuquerque – major gateway for travel to and through New Mexico. Offers assistance with itinerary development, collateral, referrals. 20 First Plaza NW Ste 601, Albuquerque, NM 87102. 505-842-9918, 800-733-9918, fax 505-247-9101.
website: www.itsatrip.org; email: info@itsatrip.org

AZTEC

CITY OF AZTEC

Aztec epitomizes the Great American West. A popular Four Corners gateway, Aztec is rich in multi-cultural heritage, ancestral traditions and top-tier amenities and events. Among them: Aztec Ruins National Monument (a UNESCO World Heritage site), world-class Quality Waters fly-fishing, over 200 natural sandstone arches, and sumptuous outdoor recreation. 110 N. Ash Ave, NM 87410. 888-543-4629
www.aztecnm.com

FARMINGTON

FARMINGTON CONVENTION & VISITORS BUREAU

Gateway to the Four Corners. Ancient Indian ruins, Native American arts and crafts, outdoor summer theater, fly fishing on the San Juan, golfing at Pinon Hills. 3041 E. Main, Farmington, NM 87402. 505-326-7602, 800-448-1240, fax 505-327-0577.
www.farmingtonnm.org

SANTA FE

SANTA FE CONVENTION AND VISITORS BUREAU

Spectacular vistas, ancient adobe, and first class accommodations and services await you in America's oldest Capital City. The Santa Fe CVB offers assistance with itinerary planning, travel literature, and referrals. 201 W. Marcy Street, Santa Fe, NM, 800-777-2489, 505-955-6200.
www.Santafe.org

SANTA FE SAGE INN

The Santa Fe Sage Inn is an excellent choice for affordable downtown lodging that connects you to the heart of Santa Fe. The hotel offers 155 attractive, comfortable rooms with a wealth of complimentary amenities including a downtown shuttle, 'Fresh Start' breakfast, exercise facility, guest laundry, parking, and wireless high-speed internet. We are located only six blocks from the historic plaza and across the street from the Railyard Park dining and shopping district. 725 Cerrillos Rd. Santa Fe, NM 87505, 505-982-5952
www.SantaFeSageInn.com

UTAH

UTAH OFFICE OF TOURISM

Utah is a place where cities, mountains, rivers and cultures converge. From the redrock of Utah's five National Parks to the "Greatest Snow on Earth®", Utah is Life Elevated! 300 North State Street, Salt Lake City, UT 84114. 801-538-1030, 800-200-1160, fax 801-538-1399.
www.visitutah.com

MONUMENT VALLEY/BLUFF/MONTICELLO

SAN JUAN COUNTY VISITOR SERVICES

San Juan County, Utah is home of Canyonlands National Park; Hovenweep, Natural Bridges and Rainbow Bridge National Monuments; Edge of the cedars and Dead Horse Point state Parks; Monument Valley Lake Powell and much more! For information, maps & travel guides call 1-800-574-4386 or email us at info@utahscanyoncountry.com. Visit us online at www.utahscanyoncountry.com

WILD RIVERS EXPEDITIONS, LLC

From May through October, we offer one to ten day trips spanning 26 to 84 miles of the San Juan River. The San Juan River has a few lively rapids but is mild by whitewater standards. This makes it perfect for families and others who think boats are the best way for traveling through Colorado Plateau canyon country. Our river trips are unique in that they focus on interpreting the rivers geologic,

human and natural histories as we travel through the canyon. Since 1957. 101 Main Street, Bluff, UT 84512, 800-422-7654, Fax: 435-672-2365.
www.riverandrains.com

BLUFF

DESERT ROSE INN & CABINS

We are a lodge style property in the heart of Southeastern Utah. Surrounding by jaw-dropping views we are a short drive to Monument Valley to the South, Moab to the North, and Durango to the East. Located at the west entrance to historic Bluff, Utah, the Desert Rose Inn architecture is an all wood style lodge with massive timbers which excite the senses with their intimate charm. Set against iridescent sunsets and bold blue skies, you'll experience a spectacle rarely found. 701 West Main Street, Bluff, UT 84512. 888-475-7673.
www.desertroseinn.com

HOLE-IN-THE-ROCK FOUNDATION

The Hole-in-the-Rock Foundation is dedicated to preserving the history and sharing the legacy of the San Juan Mission and Hole-in-the-Rock Pioneers. The Bluff Fort Historic Site commemorates the arrival of the first settlers at the future site of Bluff, Utah, in April of 1880. The 250-mile long Hole-in-the-Rock trail runs from Parowan in southwestern Utah to Bluff and Montezuma Fort in southeastern Utah. The road was blazed during the winter of 1879-80 by 70 Church of Christ of Latter-day Saints families who were colonizing the Four Corners region. Join us for a unique glimpse into pioneer life on the San Juan frontier. Admission is free! 500 East Highway 191, Bluff, UT 84512.
www.hirf.org

BRUCE CANYON

THE LODGE AT BRUCE CANYON

The Lodge at Bryce Canyon is the perfect in-park spot from which to launch your exploration into the crimson crevices and hoodoos. Accommodations include 70 motel-style guest rooms and 40 cabins along with WIFI in the Lodge lobby. The dining room is open for breakfast, lunch and dinner, offering local microbrews and international wines. Highway 63, Bryce UT. 877-386-4383. Fax 435-834-8790.
www.Travel-Forever.com/14gctp

BRUCE CANYON CITY

BEST WESTERN BRUCE CANYON GRAND HOTEL

The style and experience of a great mountain lodge, with modern day amenities such as free wireless Internet, flat panel televisions, large pool and cable TV. 164 rooms. Walking distance of historic Ruby's Inn and Bryce View Lodge in the Bryce Canyon City area. 30 North 100 East, Bryce Canyon City, UT 84764. 435-834-5700, 866-866-6634, fax 435-834-5701.
www.bestwesternbrucecanyongrandhotel.com

BEST WESTERN RUBY'S INN

Closest Accommodations to Bryce. 370 rooms, Campground, Cabins, Tipis. Shopping, Restaurants, Meeting Facilities, Nightly Rodeos, Guided Horseback rides, ATV tours, Air Tours, Bike Rentals, National Park shuttle, High speed Internet Access, ATM, Foreign Currency Exchange. Car Care/Car Rentals. Winter Activities. Open year-round. 26 South Main Street, Bryce Canyon City, UT 84764. 435-834-5341, 800-468-8660.
www.brycecanyoncampgrounds.com,
www.horserides.net, and www.rubysinn.com

CAPITOL REEF/BICKNELL/TORREY

CAPITOL REEF COUNTRY/WAYNE COUNTY TRAVEL COUNCIL Utah's least known and most surprising National Park Is Capitol Reef. Spectacular scenery, great weather, all services available. PO Box 7, Teasdale, UT 84773. Info Center: Hwys 12 and 24, Torrey. 800-858-7951, fax 435-425-3931. www.capitolreef.travel

CEDAR CITY / BRIAN HEAD

CEDAR BREAKS LODGE

A full service hotel located in the hub of Southern Utah's Color Country. Close to 4 National Parks, 2 National Monuments and Brian Head Ski Resort. 223 Hunter Ridge Rd, Brian Head, UT 84719. 435-677-3000, 888-282-3327, fax 435-677-2211. www.cedarbreakslodge.com

CEDAR CITY/BRIAN HEAD TOURISM BUREAU

Tony award winning Utah Shakespeare Festival, Cedar Breaks, Kolob Canyons, Brian Head Ski Resort, plus Bryce Canyon and Zion. 581 N. Main, Cedar City, UT 84720. 435-586-5124, 800-354-4849, fax 435-586-4022. www.ScenicSouthernUtah.com

SOUTHWEST ADVENTURE TOURS

Receptive operator, provides monthly scheduled and custom tours for large and small groups throughout the Southwest. 382 East 650 South Circle, Cedar City, UT 84720. 435-590-5864. 800-293-5444 or 435-648-2700. www.southwestadventuretours.com

KANAB

SOUTHERN UTAH'S KANE COUNTY OFFICE OF TOURISM

Visitor information for Utah's "Little Hollywood." More Westerns have been filmed in Kane County than anywhere outside of Los Angeles. Zion, Bryce, Lake Powell and Grand Canyon located in Kane County or minutes away. 78 South 100 East, Kanab, UT 84741. 435-644-5033, 800-SEE-KANE, fax 435-644-5923. www.visitsouthernutah.com

MOAB

AARCHWAY INN

AAA triple diamond rated hotel offering 97 luxury rooms and suites. We are the closest hotel to Arches National Park, Dead Horse Point and Canyonlands. The resort setting features picturesque views of red rock cliffs and buttes of the Colorado River, open air hot tub, outdoor heated pool, courtyard with grills, full basketball court, playground, nature trails and firepit. Premium lodging one mile from Moab's finest restaurants and shopping. Complimentary breakfast and shuttle service with 4 acres of parking for all your toys. 1551 N Highway 191, Moab, UT 84532, 435-259-2599, 800-341-9359, Fax 435-259-2270. www.aarchwayinn.com

MOAB ADVENTURE AND LODGING

Redstone Inn and Bighorn Lodge, both in downtown Moab, close to Arches and Canyonlands National Parks. Red Cliffs Lodge is along the Colorado River, close to a winery, horseback riding, rafting, biking, museums, restaurant, pool & spa. Mile Post 14, Hwy 128, Moab, UT 84532, 435-259-2002 www.redcliffskodge.com

MOAB ADVENTURE CENTER

We offer rafting, 4 x 4 Hummer tours, bus tours of Arches and Canyonlands, Arches hiking and mountain biking tours, horseback riding, National Park scenic flight tours. 225 South Main, Moab, UT 84532, 435-259-7019, FAX 435-259-8110, www.westernriver.com

MOAB AREA TRAVEL COUNCIL

"Where Adventure Begins." Home of Arches and Canyonlands National Parks, Dead Horse Point State Park and year round adventure. Detailed information our specialty. 84 North 100 East / PO Box 550, Moab, UT 84532. 435-259-6281, 800-635-6622, fax 435-259-1376. www.discovermoab.com

PANGUITCH

PANGUITCH CITY

Center for your stay in the Grand Circle. Bryce Canyon and travel on National Scenic Byway 12. Here you'll find motels, restaurants, museums, fishing, hunting, hiking, biking, rodeo, many trails and much more. Check the Annual Events on our website. 25 South 200 East, Panguitch, UT 84759. 435-676-8585. www.panguitch.org

BRYCE CANYON COUNTRY

Destination marketing organization for the Bryce Canyon National Park area and Utah's only All-American Road, Scenic Byway 12. Information, images, itineraries and trip planning available. 55 South Main, Panguitch, UT 84759. 435-676-1160/1161, 800-444-6689, fax 435-676-8239. www.brycecanyoncountry.com

RICHFIELD

RICHFIELD CITY

Where the world famous Paiute Trail begins! All services available - the perfect place to "springboard" into the National Parks or one of central Utah's many recreational opportunities. Over 650 hotel rooms available. 75 East Center, Richfield, UT 84701. 435-893-0457, fax 435-896-8888. www.richfieldcity.com

ST. GEORGE

ST. GEORGE CONVENTION AND VISITORS BUREAU

St. George offers year round golf on 12 courses. Enjoy the Red Rock Golf Trail, internationally famous spas and Zion National Park. Just 90 minutes North of Las Vegas on I-15. 1835 Convention Center Drive, St. George, UT 84790. 1-800-869-6635. www.utahstgeorge.com

ZION/SPRINGDALE

BEST WESTERN ZION PARK INN

Beautiful resort property near entrance of Zion National Park. Views with every room. Switchback Grille and Trading Co. with liquor store. 1215 Zion Park Blvd, PO Box 800, Springdale, UT 84767. 435-772-3200, 800-934-7275, fax 435-772-2449. www.zionparkinn.com

DESERT PEARL INN

Riverside oasis of 61 spacious studio suites artfully appointed with handcrafted natural materials. Numerous up-to-the-minute amenities. Panoramic views of Zion from each private riverfront or poolside patio/balcony. 707 Zion Park Blvd, Springdale, UT 84767. 435-772-8888, 888-828-0898, fax 435-772-8889. www.desertpearl.com

MAJESTIC VIEW LODGE


The Lodge offers 69 rooms and suites with unsurpassed views of Zion from your balcony or patio. We have a restaurant and saloon, trading post, and Wildlife museum on site. The lodge also offers a heated pool with a year round hot tub. Free wireless Internet. Free seasonal shuttle from the Lodge to Zion National Park. 2400 Zion Park Boulevard, Springdale, UT. 866-772-0665/435-772-0665. Fax 435-772-0308. www.majesticviewlodge.com.

ZION LODGE

Enjoy the only "in the park" accommodations, centrally located in Zion National Park. Offering 82 newly renovated hotel rooms and 40 historic cabins. Restaurant and Gift Shop located on site. Zion Lodge is open year round. Inquire about seasonal specials. For reservations: 888-297-2757, 303-297-2757 www.zionlodge.com

ZION PONDEROSA RANCH RESORT

Experience Zion National Park from the top! With 4,000 acres Zion Ponderosa sits on the a forested plateau on the eastern border of Zion National Park. We offer six lodging types (including vacation homes, cabins, and various camping options), dining services, and more on-property recreation than most resorts in the west, including: zip line, climbing walls, jeep tours, canyoneering, wagon rides, hiking shuttles, ATV tours, paintball, rifle shooting, horseback riding, miniature golf, and more. Twin Knolls Road, Zion National Park, UT. 800-293-5444 or 435-648-2700. www.zionponderosa.com



Published on behalf of the Grand Circle Association by Adventure Media, LLC.

Web site: www.phoenixip.com

Editor: Dana Brockway

Advertising Sales:
520-544-3936 adventuremedia@cox.net

Publisher: Simon Todd
Adventure Media, LLC

Design: Ellis Graphic Services
www.EllisGS.com

Although every effort has been made to achieve accuracy, the publisher cannot accept responsibility for errors, omissions or changes. The publication may not be reproduced, stored or transmitted in any form or by any means without prior permission of the publishers.

© Adventure Media, LLC 2014



DISCOVER
dramatic sights... historic sites

Mesa Verde **Cities of Sandstone Package**

- 2 nights at Far View Lodge inside Mesa Verde National Park
- Tickets for 2 on a half day guided tour
- \$323 for 2 persons

Book on line at
[www.visitmesaverde.com/plan/
specials-and-packages.aspx](http://www.visitmesaverde.com/plan/specials-and-packages.aspx)
or call 888-439-5016



MESA VERDE
—COLORADO—

Disclaimer: Not valid with other offers or promotions. Minimum double occupancy. Subject to availability and possible blackout dates. Commissions on Mesa Verde National Park are managed by ANSMARK and authorized by the National Park Service.



Grand Circle Association
 178 Ojo de la Vaca Road
 Santa Fe, New Mexico 87508

EXPLORE
 LAKE POWELL
your way

• Scenic Boat Tours

• Small Boat Rentals

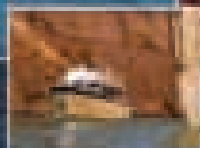
• Hiking & Fishing

• Fine Dining

• All Watersport Activities

800.845.2433
www.lakepowell.com

Lake Powell



Lake Powell Resorts & Marina managed by
 GMMG is an authorized concessionaire of
 the National Park Service, Utah Division
 National Recreation Area

Lake Powell
 RESORTS & MARINA
 of UTAH

Houseboat Rentals • Resort & Lodge Accommodations • Watersports • Hiking • Fishing • Cruises